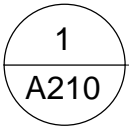
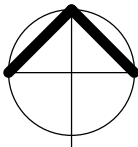


HIGH COURT OF AUSTRALIA
LEVEL 1 PROPOSED WORKS FOR A PWDWC

Drawing List			
Sheet Number	Drawing Name	Current Revision	Date
A000	COVER SHEET	C	10/08/2021
A001	SITE PLAN	B	23/07/2021
A005	SPECIFICATION NOTES 01	A	23/07/2021
A007	FIXTURES & FINISHES	A	23/07/2021
A010	EXISTING FLOOR PLAN	B	23/07/2021
A050	DEMOLITION PLAN	B	23/07/2021
A101	FLOOR PLAN NEW WORKS	C	23/07/2021
A110	RCP EXISTING	B	10/08/2021
A115	RCP DEMOLITION	B	10/08/2021
A120	RCP NEW WORKS	C	10/08/2021
A210	SECTIONS	A	10/08/2021
A300	DETAIL ELEVATIONS FEMALE REST ROOM EXISTING	B	23/07/2021
A301	DETAIL ELEVATIONS ACCESSIBLE TOILET EXISTING	B	23/07/2021
A305	DETAIL ELEVATIONS FEMALE REST ROOM DEMOLITION	B	23/07/2021
A306	DETAIL ELEVATIONS PARENTS ROOM DEMOLITION	B	23/07/2021
A310	DETAIL ELEVATIONS NEW PWDWC	C	23/07/2021
A311	DETAIL ELEVATIONS NEW PARENTS ROOM	B	23/07/2021
A325	DETAIL SECTIONS 01		
A999	SAFETY IN DESIGN REPORT	A	23/07/2021



PLAN 1 : 500
AERIAL SOURCE ACTMAPI

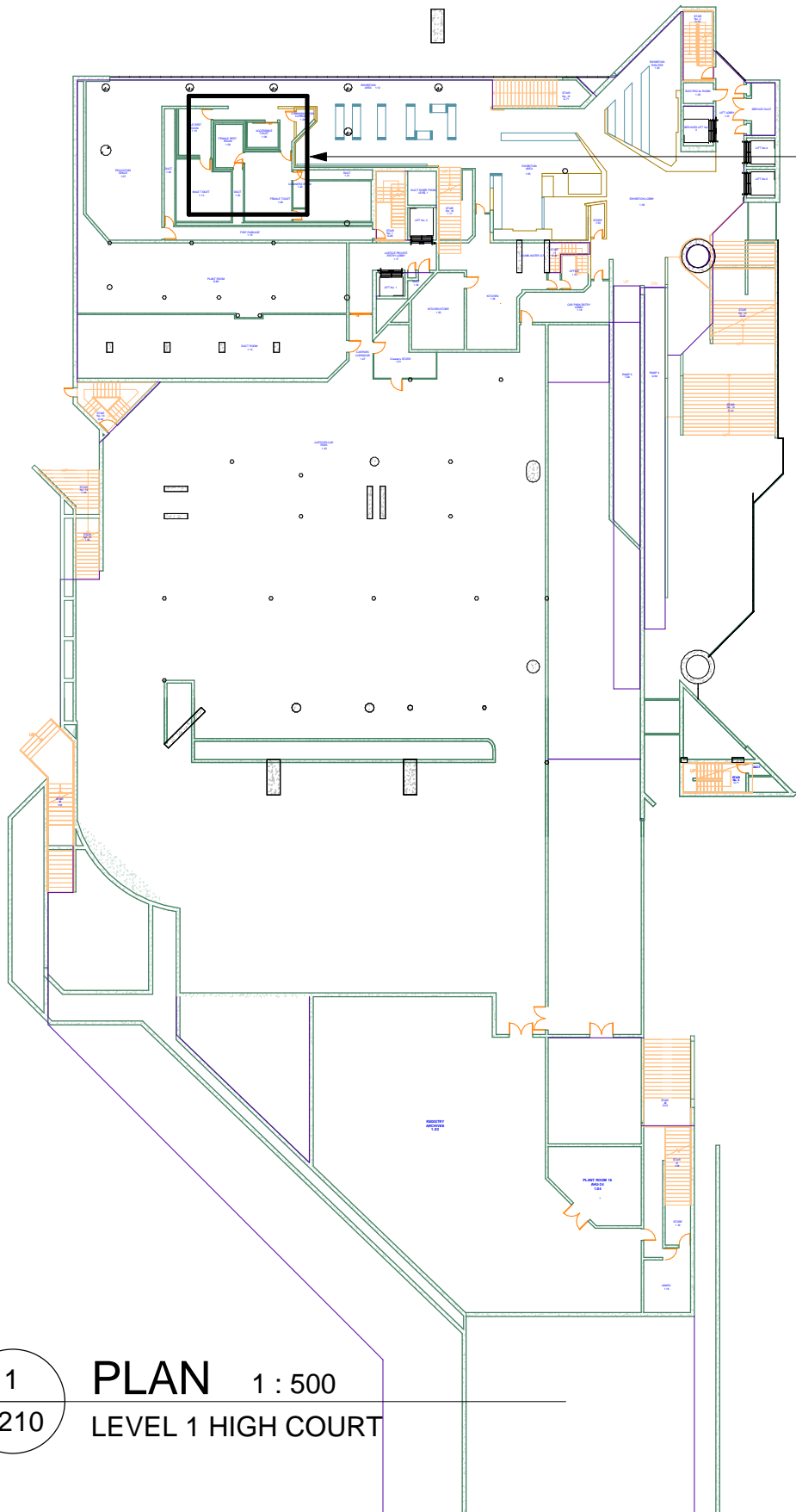


NOTE: DO NOT SCALE OFF DRAWING

10/08/2021 1:52:30 PM

<div>AMENDMENTS</div> <div>A 22/06/2021 INITIAL ISSUE</div> <div>B 23/07/2021 ISSUED FOR TENDER</div> <div>C 10/08/2021 ISSUED FOR TENDER</div>	<div>ARCHITECT</div> <div><div>EMA</div><div>A</div></div> <div>Eric Martin & Associates</div> <div>10/68 Jardine Street KINGSTON ACT 2604</div> <div>Ph 02 6260 6395 Fax 02 6260 6413</div> <div>emaa@emaa.com.au</div> <div>Eric Martin Registered Architect</div> <div>ACT 376 VIC 5150 NSW 5991 WA 1663 QLD 3391</div>	<div>CLIENT</div> <div>HIGH COURT OF AUSTRALIA</div>	<div>PROJECT</div> <div>HIGH COURT OF AUSTRALIA</div> <div>LEVEL 1 PWDWC</div> <div>DRAWING</div> <div>TITLE</div> <div>COVER SHEET</div>	<div>CADFILE</div> <div>V:\Projects 2020\20017 High Court of Australia\I Tendering\20017 Level 1 HCA PWDWC TENDER.rvt</div> <div><div>SCALE</div><div>1:500 @A3</div></div> <div><div>DRAWN</div><div>PM</div></div> <div><div>DATE</div><div>10/08/2021</div></div> <div><div>CHECKED</div><div>EM</div></div> <div><div>ISSUE/ REVISION</div><div>TENDER C</div></div> <div><div>DWG No</div><div>20017-A000/C</div></div>
---	--	--	---	--

TENDER



LEVEL 1
AREA OF PROPOSED
NEW WORK

1
A210
PLAN 1 : 500
LEVEL 1 HIGH COURT



NOTE: DO NOT SCALE OFF DRAWING

10/08/2021 1:52:31 PM

AMENDMENTS A 22/06/2021 INITIAL ISSUE B 23/07/2021 ISSUED FOR TENDER	ARCHITECT EMAA Eric Martin & Associates 10/68 Jardine Street KINGSTON ACT 2604 Ph 02 6260 6395 Fax 02 6260 6413 emaa@emaa.com.au <small>Eric Martin Registered Architect ACT 376 VIC 5150 NSW 5991 WA 1663 QLD 3391</small>	CLIENT HIGH COURT OF AUSTRALIA	PROJECT HIGH COURT OF AUSTRALIA LEVEL 1 PWDWC		CADFILE V:\Projects 2020\20017 High Court of Australia\I Tendering\20017 Level 1 HCA PWDWC TENDER.rvt	
			DRAWING TITLE SITE PLAN		SCALE 1:500@A3	DRAWN PM
					DATE 23/07/2021	ISSUE/ REVISION TENDER B
					CHECKED EM	DWG No 20017-A001/B

TENDER

10/08/2021 1:52:31 PM

SECTION 02050 DEMOLITION

DEMOLISH ALL FIXTURES AND FINISHES INCLUDING THE CEILING AS PER DEMOLITION DRAWINGS, INCLUDING MECHANICAL, ELECTRICAL AND HYDRAULIC ENGINEERS SPECIFICATIONS RETAIN PLUMBING FOR ADAPTION AS SPECIFIED IN THE HYDRAULIC ENGINEERS SPECIFICATION

SECTION 02150 ASBESTOS REMOVAL

IF ASBESTOS MATERIAL IS DISCOVERED ON THE SITE AFTER WORK HAS STARTED, THE WORK WILL BE CEASED IMMEDIATELY AND LICENSED PERSONS ENGAGED TO REMOVE ASBESTOS-CONTAINING MATERIAL, CERTIFY ITS REMOVAL AND RE-ISSUE AN ASBESTOS CLEARANCE CERTIFICATE.

SECTION 02510 WATER DISTRIBUTION

AS PER HYDRAULIC ENGINEERS SPECIFICATIONS

SECTION 02530 SANITARY SEWERAGE

AS PER HYDRAULIC ENGINEERS SPECIFICATIONS

SECTION 08460 AUTOMATIC SLIDING DOOR ASSEMBLIES

PROVIDE A SOLID CORE DOOR WITH AUTOMATIC POWER CONTROL. PROVIDE POWER AS PER THE MANUFACTURERS SPECIFICATIONS. INCLUDE THE DORMAKABA DOOR CONTROLLERS AS SHOWN ON THE ARCHITECTURAL PLANS AND ELEVATIONS. PROVIDE POWER TO THE DOOR CONTROLLERS AND DOOR. PAINT FINISH DOOR AND ENSURE THE IS SUITABLE LUMINANCE CONTRAST BETWEEN THE DOOR AND THE WALL OR WALL AND DOOR FRAME. DEMOLISH THE EXISTING WALL AS NECESSARY TO INSTALL THE NEW DOOR. ALL WORK TO BE CONDUCTED AS PER RELEVANT AUSTRALIAN STANDARDS

SECTION 08850 MIRRORS

NEW SOLID GLASS MIRROR BONDED TO BACKING WITH NO FRAME 700MM WIDE AND 950MM HIGH TO COMPLY WITH AS1428.1 TO BE INSTALLED ON THE WALL ABOVE THE BASIN. GROUND AND POLISHED ON EXPOSED EDGES. FIX TO THE WALL WITH APPROPRIATE FIXINGS AS PER MANUFACTURERS SPECIFICATIONS.

SECTION 09300 CERAMIC TILE

SUPPLY AND INSTALL CERAMIC TILE WORK INCLUDING BUT NOT LIMITED TO THE: SUITABLE PREPARATION OF SURFACES BEFORE TILING OR BEDDING AND BEDDING SCREEDS WITH A SUITABLE WATERPROOF MEMBRANE. ALSO INSTALL WALL TILES AND FLOOR TILES. CLEAN FINISHED TILED SURFACES AND FOR TILE SPECIFICATIONS REFER TO FINISHES SCHEDULE. PROVIDE SLOPE ON THE FLOOR TO THE FLOOR WASTE. INSTALL GROUT AND ENSURE ALL WORK IS UNDERTAKEN IN ACCORDANCE OF AUSTRALIAN STANDARDS.

SECTION 09500 SUSPENDED CEILING

SUPPLY AND INSTALL A COMPLETE PLASTERBOARD SUSPENDED CEILING FOR THE PWDWC. COORDINATE WITH MECHANICAL AND ELECTRICAL SERVICES. INSTALL A 50mm CORNICE.

SECTION 09910 PAINTING

ALL EXPOSED PLASTERBOARD IS TO BE PRIMED AND PAINTED, COLOUR TO BE CONFIRMED. ALL CEILINGS AND CORNICES ARE TO BE PRIMED & PAINTED WITH CEILING WHITE. PAINT DOOR & FRAME & WALL IN FEMALE TOILET

SECTION 15150 FLOOR DRAINS

BUILD IN FLOOR WASTE WITH TILES TO SLOPE TOWARD THE FLOOR WASTE.

SECTION 15782 MECHANICAL SERVICES

AS PER MECHANICAL ENGINEERS SPECIFICATIONS

SECTION 16350 ELECTRICAL INSTALLATIONS

AS PER ELECTRICAL ENGINEERS SPECIFICATIONS

SECTION 16515 LOW VOLTAGE LIGHTING

AS PER ELECTRICAL ENGINEERS SPECIFICATIONS

SECTION 16710 COMMUNICATION CABLING

AS PER ELECTRICAL ENGINEERS SPECIFICATIONS

NOTE: DO NOT SCALE OFF DRAWING

AMENDMENTS A 23/07/2021 ISSUED FOR TENDER	ARCHITECT EMAA Eric Martin & Associates 10/68 Jardine Street KINGSTON ACT 2604 Ph 02 6260 6395 Fax 02 6260 6413 emaa@emaa.com.au <u>Eric Martin Registered Architect</u> ACT 376 VIC 5150 NSW 5991 WA 1663 QLD 3391	CLIENT HIGH COURT OF AUSTRALIA	PROJECT HIGH COURT OF AUSTRALIA LEVEL 1 PWDWC	CADFILE V:\Projects 2020\20017 High Court of Australia\I Tendering\20017 Level 1 HCA PWDWC TENDER.rvt	
			DRAWING	SCALE 1:100 @A3	DRAWN PM
			TITLE SPECIFICATION NOTES 01	DATE 23/07/2021	ISSUE/ REVISION TENDER A
				CHECKED EM	DWG No 20017-A005/A

TENDER

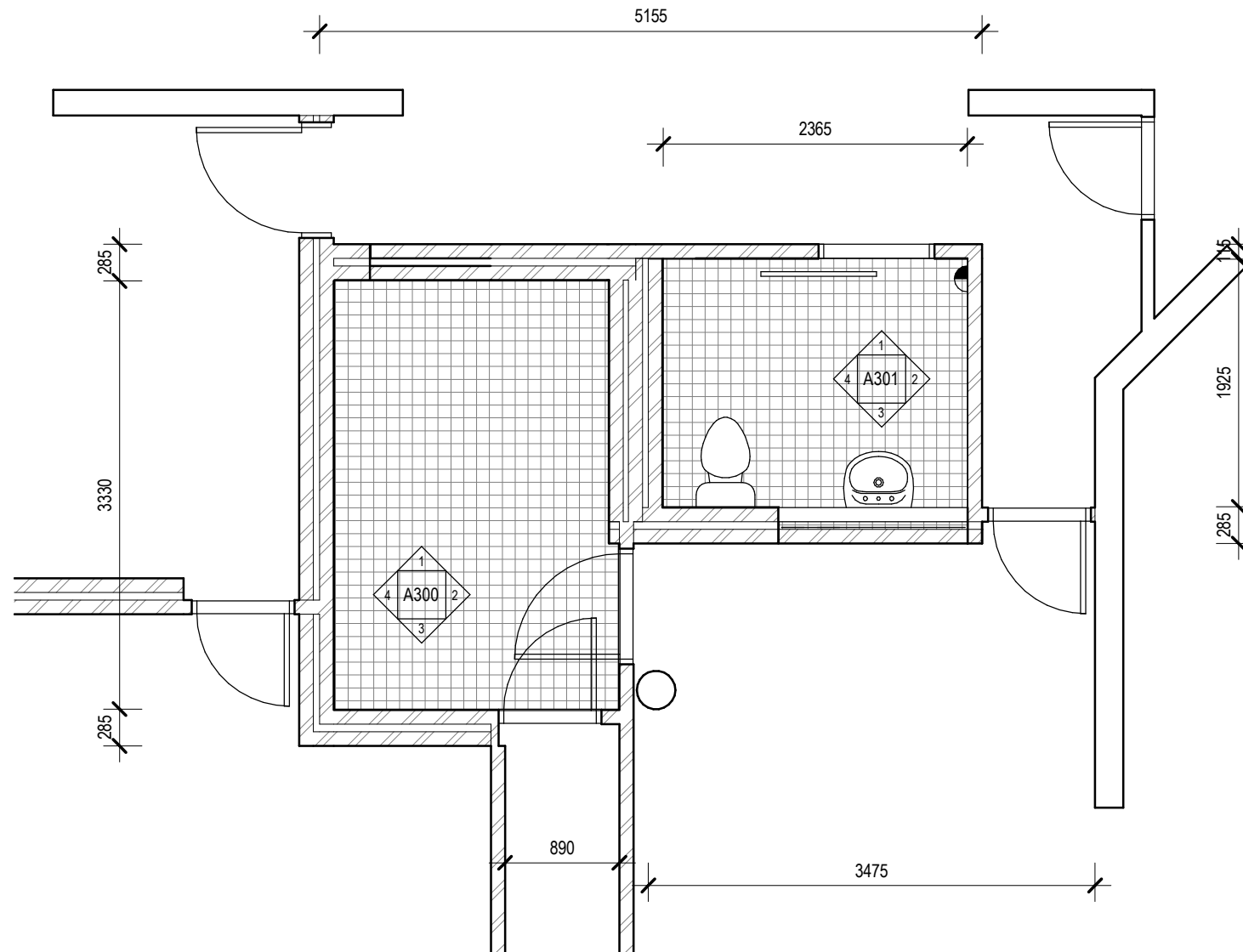
B1: CAROMA BASIN OPAL 720 WALL BASIN RIGTH HAND SHELF
MX: CAROMA ACQUA CARE BASIN MIXER 90989C5A
C: 50mm COVED PLASTER CORNICE PAINTED CEILING WHITE
GPO: CLIPSAL 2000 SERIES - POWER TO AUTO DOOR TO COMPLY WITH AS3000 & AUTO DOOR MANUFACTURERES SPECIFICATIONS
DOOR2: SOLID CORE DOOR 920mm LEAF MINIMUM AUTO OPERATED
FW: FLOOR WASTE ART AUSTRALIA 316 STAINLESS STEEL 100mm SQUARE
GR1: MAIN GRABRAIL CAROMA CAARE SUPPORT GRABRAIL - 140 DEGREE ANGLED 870 X 700 LEFT HAND 687466SS
GR2: 300mm GRABRAIL CAROMA CARE SUPPORT GRABRAIL - 300mm STRAIGHT 687471SS
HK: HOOK RBA1622-120
MD: CLIPSAL MOTION DETECTOR SWITCH WITH FAN AS PER ELECTRICAL ENGINEERS SPECIFICATIONS
M1: MIRROR 700mm x 1050mm
M2: MIRROR 1470mm x 890mm EXISTING
PAN1: CAROMA CARE 800 CLEANFLUSH WALL FACED SUITE WITH BACKREST, CONTRASTING ANTHRACITE GREY SEAT S TRAP ACCESSIBLE TO AS1428.1 PAN # 901920BAG
PPB: PAINTED PLASTERBOARD COLOR TO BE CONFIRMED
PTD: PAPER TOWEL DISPENSER METLAM STAINLESS STEEL ML725SS_MK2
SD: SOAP DISPENSER METLAM STAINLESS STEEL ML605BS
T1: 200mm x 100mm x 6mm WALL TILES AS PER HIGH COURT NEW WORKS REQUIREMENTS TO BE CONFIRMED
FT: 100mm x 100mm FLOOR TILES AS PER HIGH COURT NEW WORKS REQUIREMENTS TO BE CONFIRMED
TPH: TOILET PAPER HOLDER METLAM 700_SS_TRH
WPTB: WASTE PAPER TOWEL BIN - NOT TO ENROACH INTO CIRCULATION SPACE
BCT: BABY CHANGE TABLE HORIZONTAL KOALA KARE BABY CHANGE STATION KB200-SS
HD: DYSON AIR BLADE V HAND DRYER
ADOE: DORMAKABA AUTO DOOR OPERATION PAD EXTERNAL 205mm HIGH 230mm WIDE
ADOI: DORMAKABA AUTO DOOR OPERATION PAD INTERNAL 265mm HIGH 230mm WIDE
SG1: BRAILLE TACTILE SIGNS PWDWC SIGN PART NUMBER BTS11LHn-AL-blu
SG2: BRAILLE TACTILE SIGNS UNISEX BABY CHANGE ROOM PART NUMBER BTS162n-blu

NOTE: DO NOT SCALE OFF DRAWING

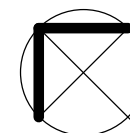
AMENDMENTS A 23/07/2021 ISSUED FOR TENDER	ARCHITECT <div>EMA A</div> <div>Eric Martin & Associates 10/68 Jardine Street KINGSTON ACT 2604 Ph 02 6260 6395 Fax 02 6260 6413 emaa@emaa.com.au <small>Eric Martin Registered Architect ACT 376 VIC 5150 NSW 5991 WA 1663 QLD 3391</small></div>	CLIENT HIGH COURT OF AUSTRALIA	PROJECT HIGH COURT OF AUSTRALIA LEVEL 1 PWDWC	CADFILE V:\Projects 2020\20017 High Court of Australia\I Tendering\20017 Level 1 HCA PWDWC TENDER.rvt	
				SCALE 1:100 @A3	DRAWN PM
				DATE 23/07/2021	ISSUE/ REVISION TENDER A
			DRAWING TITLE FIXTURES & FINISHES	CHECKED EM	DWG No 20017-A007/A

10/08/2021 1:52:32 PM

TENDER



1 PLAN 1 : 50
A210 GROUND FLOOR PLAN

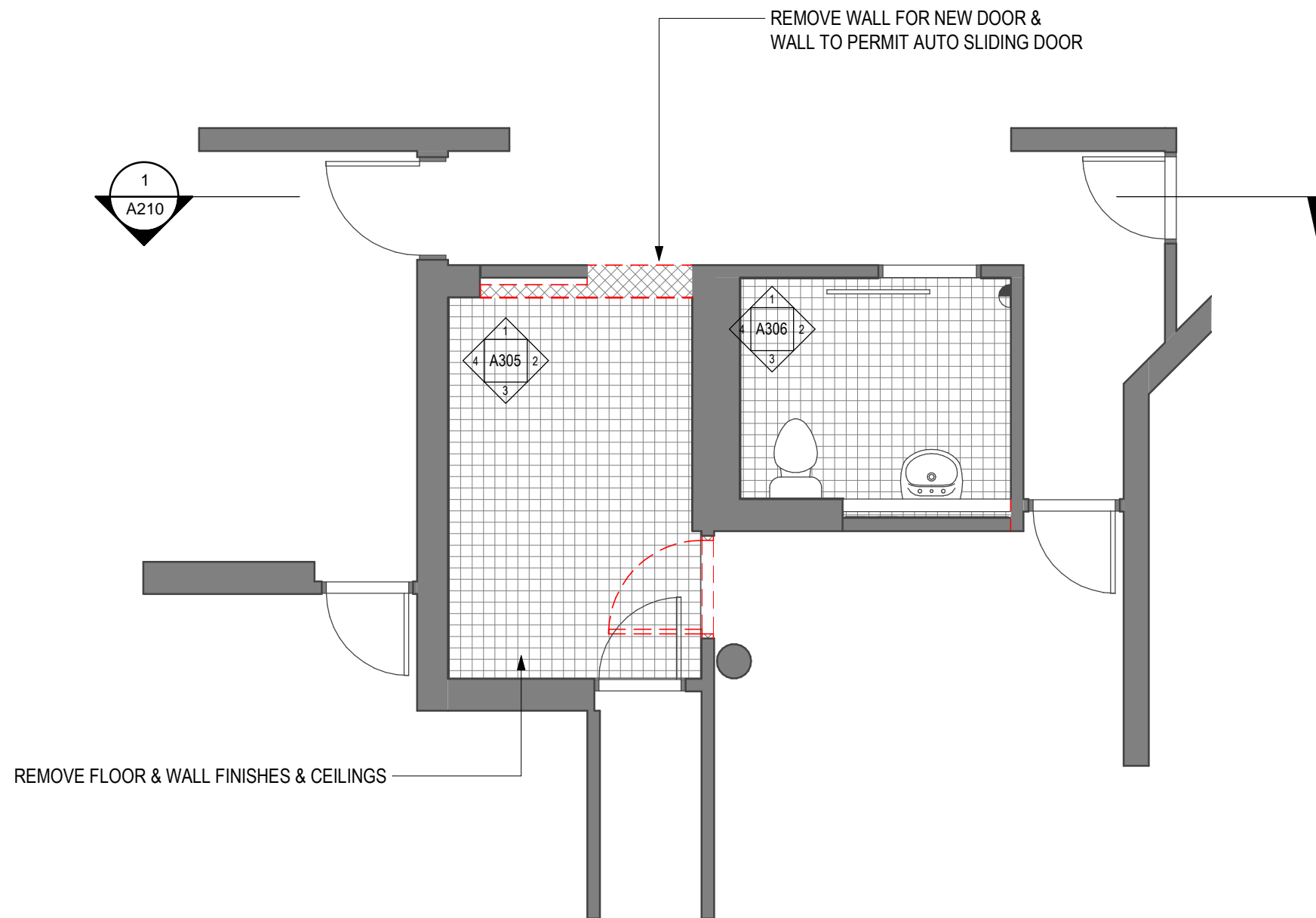


NOTE: DO NOT SCALE OFF DRAWING

10/08/2021 1:52:33 PM

AMENDMENTS A 22/06/2021 INITIAL ISSUE B 23/07/2021 ISSUED FOR TENDER	ARCHITECT <div>EMA A</div> Eric Martin & Associates 10/68 Jardine Street KINGSTON ACT 2604 Ph 02 6260 6395 Fax 02 6260 6413 emaa@emaa.com.au <small>Eric Martin Registered Architect ACT 376 VIC 5150 NSW 5991 WA 1663 QLD 3391</small>	CLIENT HIGH COURT OF AUSTRALIA	PROJECT HIGH COURT OF AUSTRALIA LEVEL 1 PWDWC	CADFILE V:\Projects 2020\20017 High Court of Australia\I Tendering\20017 Level 1 HCA PWDWC TENDER.rvt	
			DRAWING TITLE	SCALE 1:50@A3	DRAWN PM
			EXISTING FLOOR PLAN	DATE 23/07/2021	ISSUE/ REVISION TENDER B
				CHECKED EM	DWG No 20017-A010/B

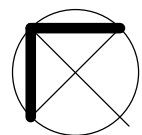
TENDER



1
A210

PLAN 1 : 50

DEMOLITION PLAN



NOTE: DO NOT SCALE OFF DRAWING

AMENDMENTS
 A 22/06/2021 INITIAL ISSUE
 B 23/07/2021 ISSUED FOR TENDER

ARCHITECT
EMA A
 Eric Martin & Associates
 10/68 Jardine Street KINGSTON ACT 2604
 Ph 02 6260 6395 Fax 02 6260 6413
 emaa@emaa.com.au
 Eric Martin Registered Architect
 ACT 376 VIC 5150 NSW 5991 WA 1663 QLD 3391

CLIENT
HIGH COURT OF AUSTRALIA

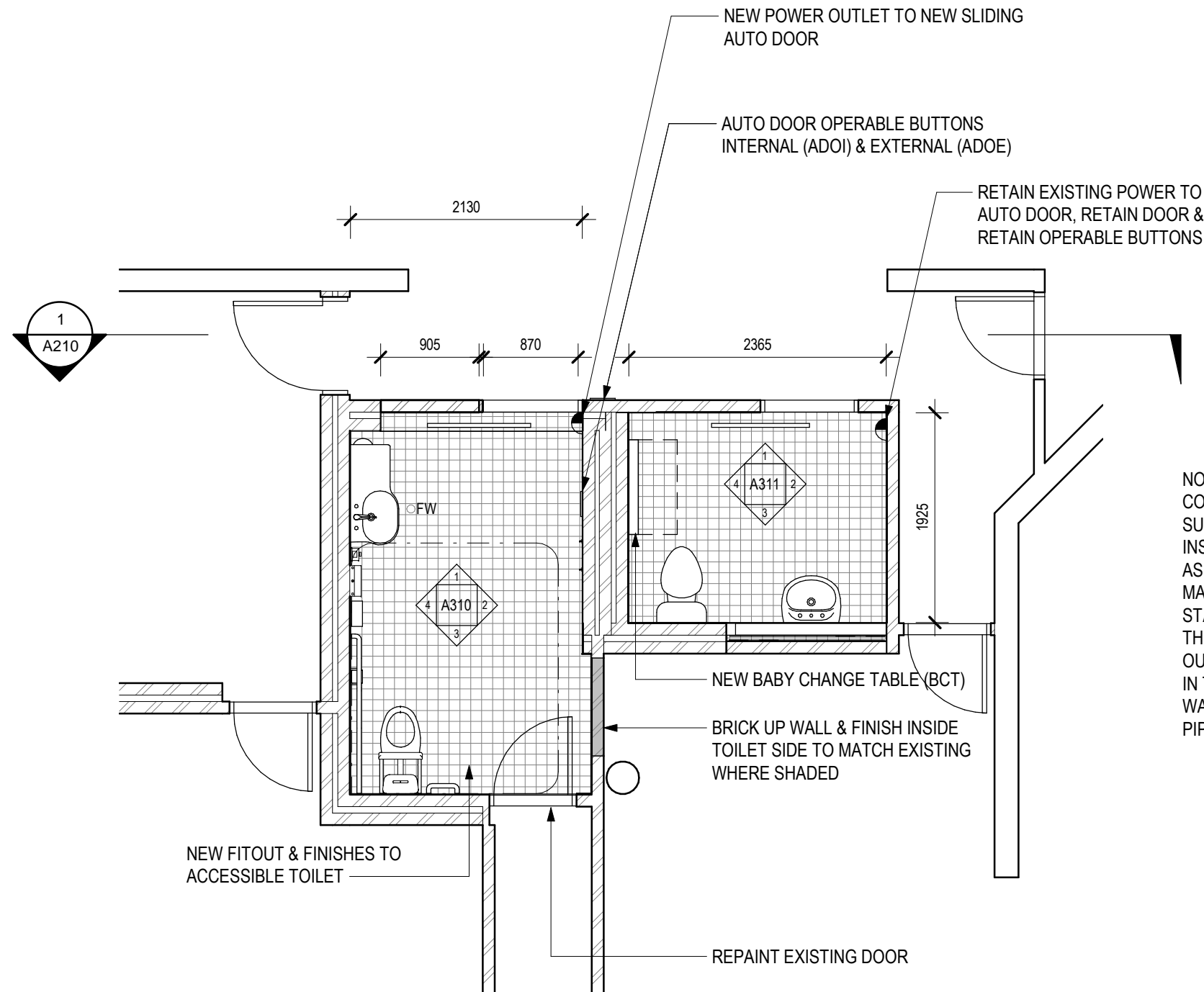
PROJECT
HIGH COURT OF AUSTRALIA
LEVEL 1 PWDWC

DRAWING
TITLE
DEMOLITION PLAN

CADFILE V:\Projects 2020\20017 High Court of Australia\Tendering\20017 Level 1 HCA PWDWC TENDER.rvt	
SCALE 1:50@A3	DRAWN PM
DATE 23/07/2021	ISSUE/ REVISION TENDER B
CHECKED EM	DWG No 20017-A050/B

10/08/2021 1:52:33 PM

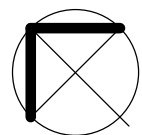
TENDER



NOTE:
COORDINATE PLUMBING SERVICES TO PROVIDE APPROPRIATE SUPPLY OF WATER AND RELEASE OF WASTE WATER TO SEWER. INSTALL NEW PLUMBING FIXTURES ON THE PLANS AND MIXER ASSOCIATED WITH THE BASIN. INSTALL AS PER MANUFACTURERS SPECIFICATIONS AND AUSTRALIAN STANDARDS. CONNECT HOT AND COLD WATER TO THE MIXER ON THE BASIN FROM EXISTING SERVICES INFRASTRUCTURE. SET OUT PAN AND BASIN AS PER DRAWINGS AND AS1428.1. INCLUDE IN THIS WORK THE CONNECTION OF THE FITTINGS TO FLOORS, WALLS, OTHER FITTINGS, WASTE OUTLETS, WATER SUPPLY PIPES AND VENT PIPES.

1
A210

PLAN 1 : 50 GROUND FLOOR PLAN NEW WORKS



NOTE: DO NOT SCALE OFF DRAWING

AMENDMENTS

A 22/06/2021 INITIAL ISSUE
B 06/07/2021 GENERAL AMENDMENTS
C 23/07/2021 ISSUED FOR TENDER

ARCHITECT

EMAA

Eric Martin & Associates
10/68 Jardine Street KINGSTON ACT 2604
Ph 02 6260 6395 Fax 02 6260 6413
emaa@emaa.com.au
Eric Martin Registered Architect
ACT 376 VIC 5150 NSW 5991 WA 1663 QLD 3391

CLIENT

HIGH COURT OF
AUSTRALIA

PROJECT

HIGH COURT OF AUSTRALIA
LEVEL 1 PWDWC

DRAWING

TITLE

FLOOR PLAN NEW WORKS

CADFILE

V:\Projects 2020\20017 High Court of Australia\Tendering\20017 Level 1
HCA PWDWC TENDER.rvt

SCALE

1:50@A3

DRAWN

PM

DATE

23/07/2021

ISSUE/ REVISION

TENDER C

CHECKED

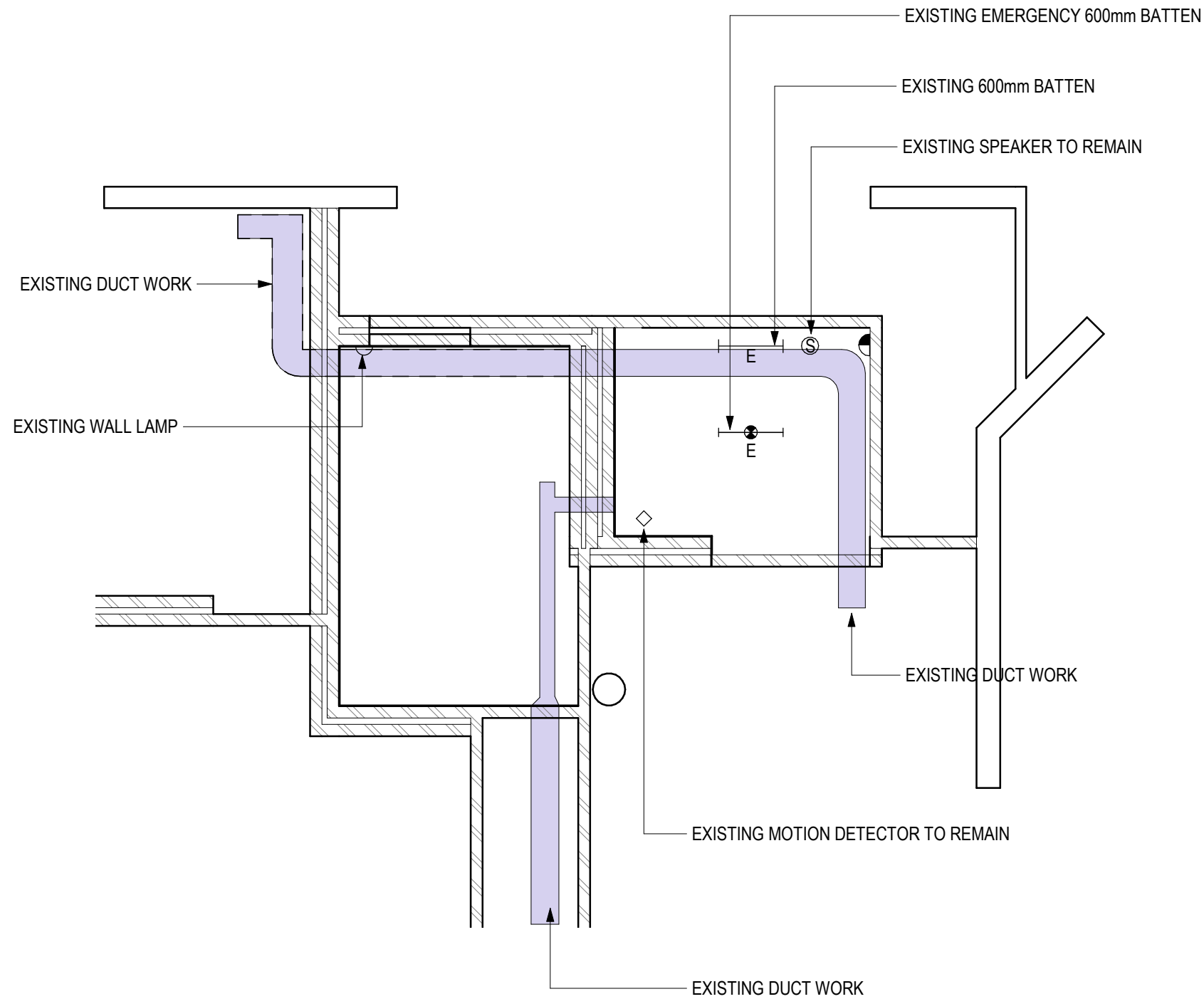
EM

DWG No

20017-A101/C

10/08/2021 1:52:34 PM

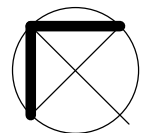
TENDER



1
A210

REFLECTED CEILING PLAN₁ : 50

RCP EXISTING



NOTE: DO NOT SCALE OFF DRAWING

AMENDMENTS
A 23/07/2021 ISSUED FOR TENDER
B 10/08/2021 ISSUED FOR TENDER

ARCHITECT
EMA
Eric Martin & Associates
10/68 Jardine Street KINGSTON ACT 2604
Ph 02 6260 6395 Fax 02 6260 6413
emaa@emaa.com.au
Eric Martin Registered Architect
ACT 376 VIC 5150 NSW 5991 WA 1663 QLD 3391

CLIENT
HIGH COURT OF AUSTRALIA

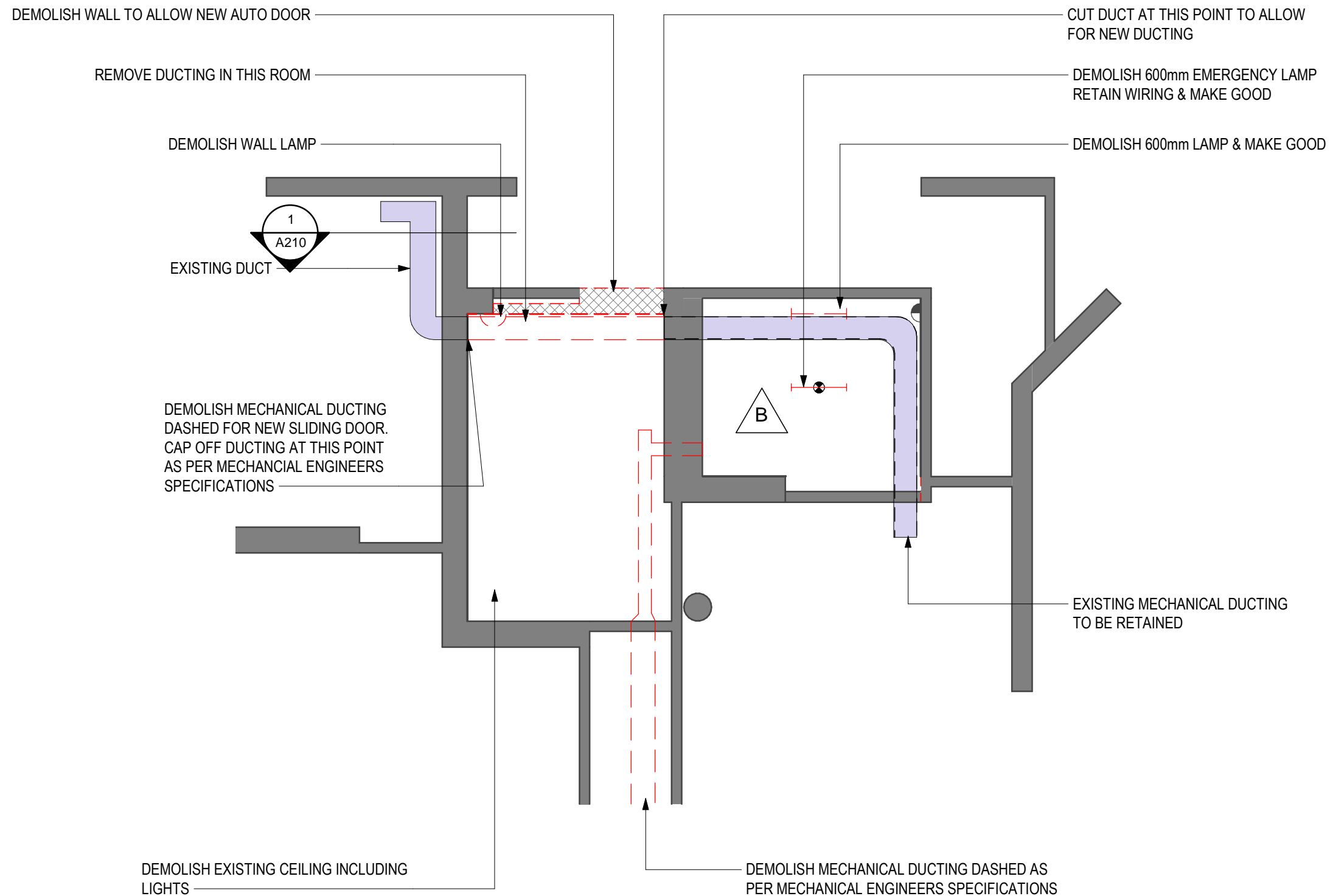
PROJECT
**HIGH COURT OF AUSTRALIA
LEVEL 1 PWDWC**

DRAWING
TITLE
RCP EXISTING

CADFILE V:\Projects 2020\20017 High Court of Australia\I Tendering\20017 Level 1 HCA PWDWC TENDER.rvt	
SCALE 1:50@A3	DRAWN PM
DATE 10/08/2021	ISSUE/ REVISION TENDER B
CHECKED EM	DWG No 20017-A110/B

10/08/2021 1:52:35 PM

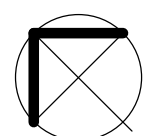
TENDER



1
A210

REFLECTED CEILING PLAN 1 : 50

RCP DEMOLITION

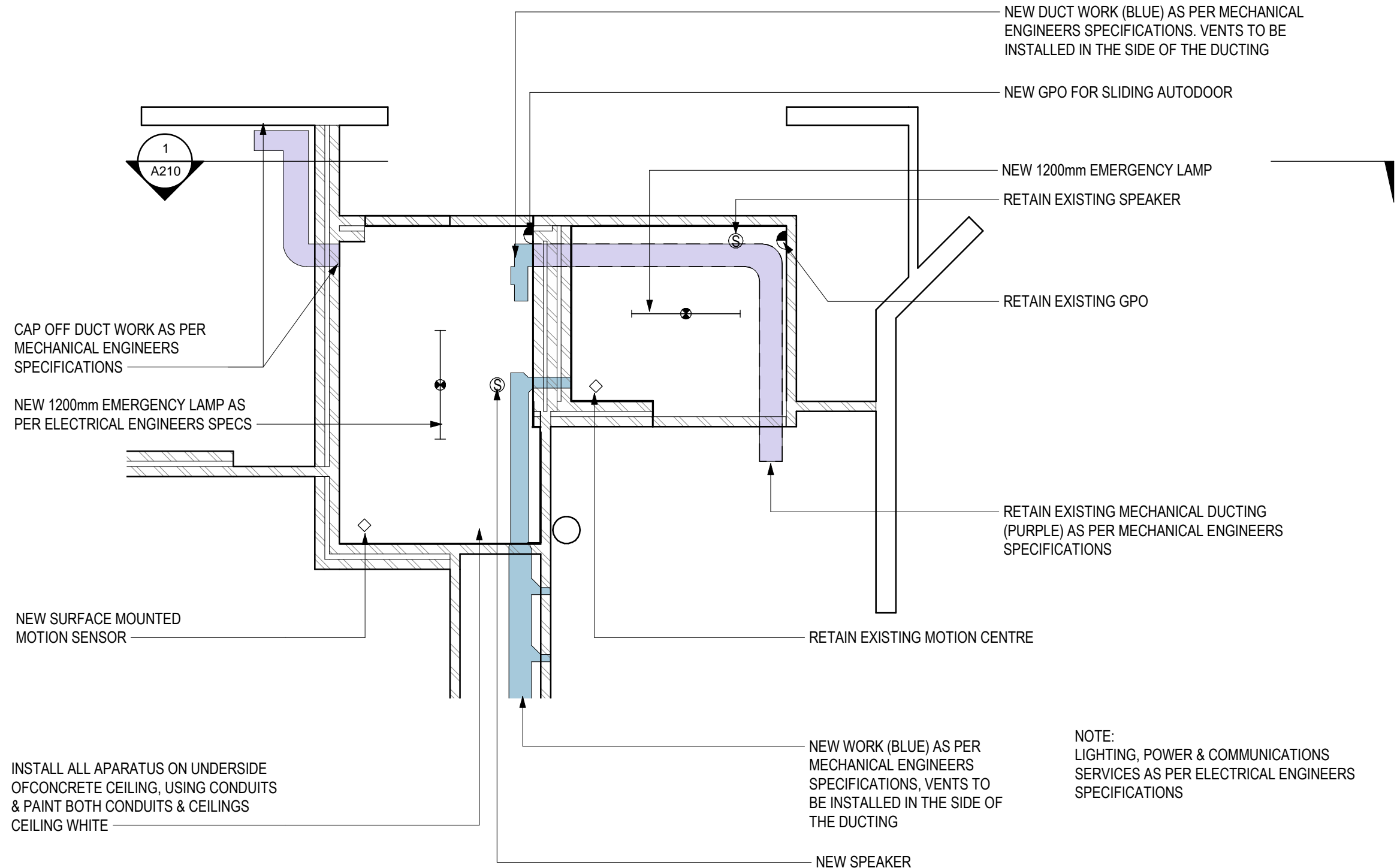


NOTE: DO NOT SCALE OFF DRAWING

10/08/2021 1:52:36 PM

<div>AMENDMENTS</div> <div>A 23/07/2021 ISSUED FOR TENDER</div> <div>B 10/08/2021 ISSUED FOR TENDER</div>	<div>ARCHITECT</div> <div><div>EMA</div><div>A</div></div> <div>Eric Martin & Associates</div> <div>10/68 Jardine Street KINGSTON ACT 2604</div> <div>Ph 02 6260 6395 Fax 02 6260 6413</div> <div>emaa@emaa.com.au</div> <div>Eric Martin Registered Architect</div> <div>ACT 376 VIC 5150 NSW 5991 WA 1663 QLD 3391</div>	<div>CLIENT</div> <div>HIGH COURT OF AUSTRALIA</div>	<div>PROJECT</div> <div>HIGH COURT OF AUSTRALIA</div> <div>LEVEL 1 PWDWC</div> <div>DRAWING</div> <div>TITLE</div> <div>RCP DEMOLITION</div>	<div>CADFILE</div> <div>V:\Projects 2020\20017 High Court of Australia\Tendering\20017 Level 1 HCA PWDWC TENDER.rvt</div> <div><div>SCALE</div><div>1:50@A3</div></div> <div><div>DATE</div><div>10/08/2021</div></div> <div><div>CHECKED</div><div>EM</div></div> <div><div>DRAWN</div><div>PM</div></div> <div><div>ISSUE/ REVISION</div><div>TENDER B</div></div> <div><div>DWG No</div><div>20017-A115/B</div></div>
---	--	--	--	--

TENDER

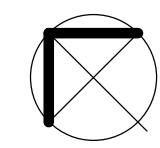


NOTE:
LIGHTING, POWER & COMMUNICATIONS
SERVICES AS PER ELECTRICAL ENGINEERS
SPECIFICATIONS

1
A210

REFLECTED CEILING PLAN₁ : 50

RCP NEW WORKS



NOTE: DO NOT SCALE OFF DRAWING

10/08/2021 1:52:37 PM

<div>AMENDMENTS</div> <div>A 16/07/2021 INITIAL ISSUE</div> <div>B 23/07/2021 ISSUED FOR TENDER</div> <div>C 10/08/2021 ISSUED FOR TENDER</div>	<div>ARCHITECT</div> <div>EMA A</div> <div>Eric Martin & Associates</div> <div>10/68 Jardine Street KINGSTON ACT 2604</div> <div>Ph 02 6260 6395 Fax 02 6260 6413</div> <div>emaa@emaa.com.au</div> <div>Eric Martin Registered Architect</div> <div>ACT 376 VIC 5150 NSW 5991 WA 1663 QLD 3391</div>	<div>CLIENT</div> <div>HIGH COURT OF AUSTRALIA</div>	<div>PROJECT</div> <div>HIGH COURT OF AUSTRALIA</div> <div>LEVEL 1 PWDWC</div>		<div>CADFILE</div> <div>V:\Projects 2020\20017 High Court of Australia\ Tendering\20017 Level 1 HCA PWDWC TENDER.rvt</div>	
			<div>SCALE</div> <div>1:50@A3</div>		<div>DRAWN</div> <div>PM</div>	
			<div>DATE</div> <div>10/08/2021</div>		<div>ISSUE/ REVISION</div> <div>TENDER C</div>	
			<div>CHECKED</div> <div>EM</div>		<div>DWG No</div> <div>20017-A120/C</div>	
			<div>DRAWING</div> <div>TITLE</div> <div>RCP NEW WORKS</div>			

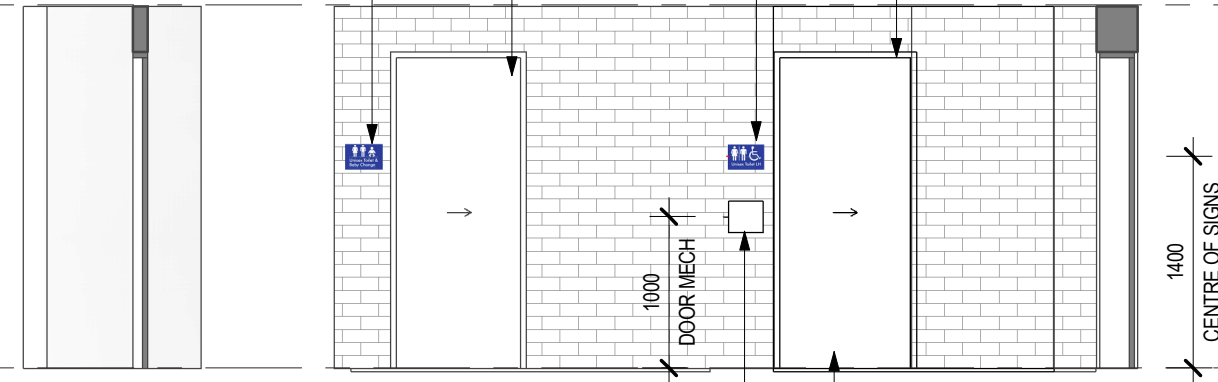
TENDER

RETAIN SLIDING AUTO DOOR &
OPERATING MECHANISM TO REPURPOSED
PARENTS ROOM

(SG2) UNISEX BABY CHANGE SIGN

(SG1) UNISEX LH PWDWC SIGN AS PER AS1428.1

METAL DOOR FRAME TO MATCH
ADJACENT DOORS. PAINTED TO
MATCH EXISTING



NEW DORMAKABA EXTERNAL SLIDING AUTO
DOOR OPERATING SWITCH FOR NEW PWDWC

NEW SLIDING SOLID CORE AUTO DOOR MUST
HAVE A MINIMUM OPENING CLEARANCE OF 850mm

1

A050

SECTION 1 : 50

EXTERNAL WALL TO PWDWC & PARENTS ROOM

NOTE: DO NOT SCALE OFF DRAWING

AMENDMENTS
A 10/08/2021 ISSUED FOR TENDER

ARCHITECT

EMAA

Eric Martin & Associates
10/68 Jardine Street KINGSTON ACT 2604
Ph 02 6260 6395 Fax 02 6260 6413
emaa@emaa.com.au
Eric Martin Registered Architect
ACT 376 VIC 5150 NSW 5991 WA 1663 QLD 3391

CLIENT
HIGH COURT OF
AUSTRALIA

PROJECT
HIGH COURT OF AUSTRALIA
LEVEL 1 PWDWC

DRAWING
TITLE
SECTIONS

CADFILE
V:\Projects 2020\20017 High Court of Australia\I Tendering\20017 Level 1
HCA PWDWC TENDER.rvt

SCALE
1:50@A3

DRAWN
PM

DATE
10/08/2021

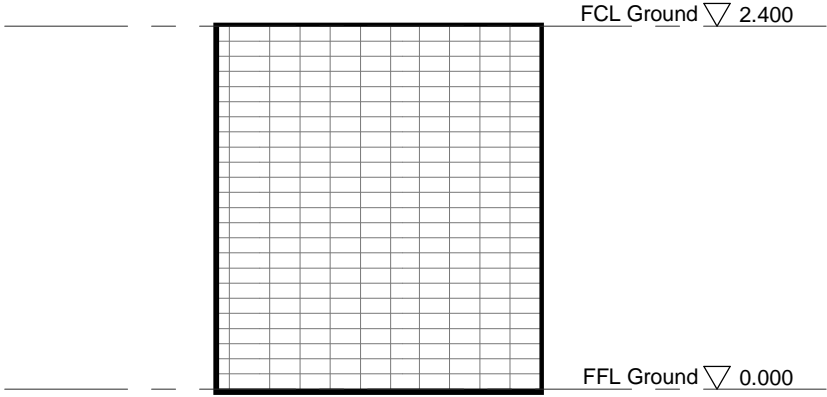
ISSUE/ REVISION
TENDER A

CHECKED
EM

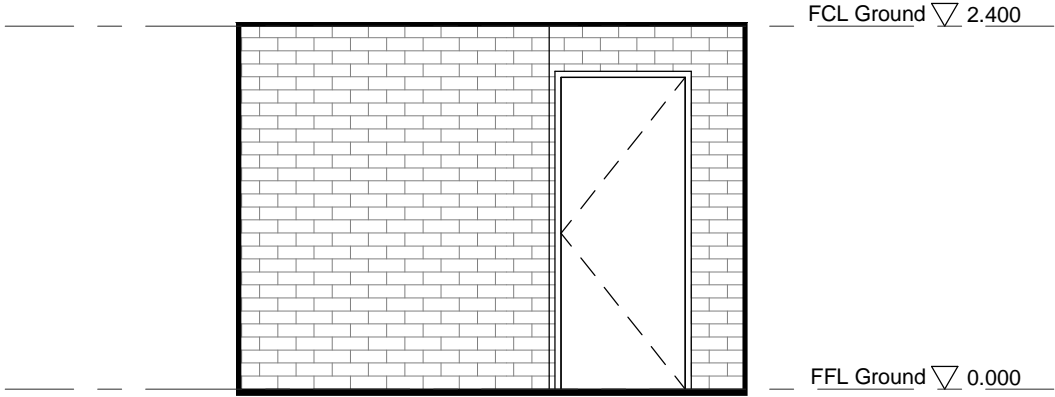
DWG No
20017-A210/A

10/08/2021 1:52:37 PM

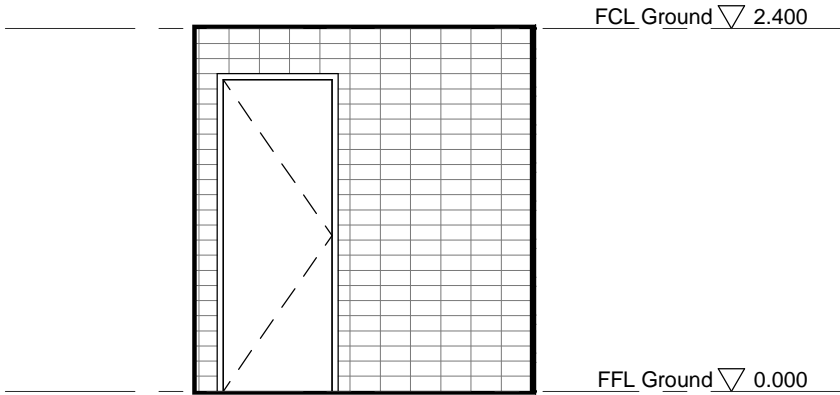
PRELIMINARY



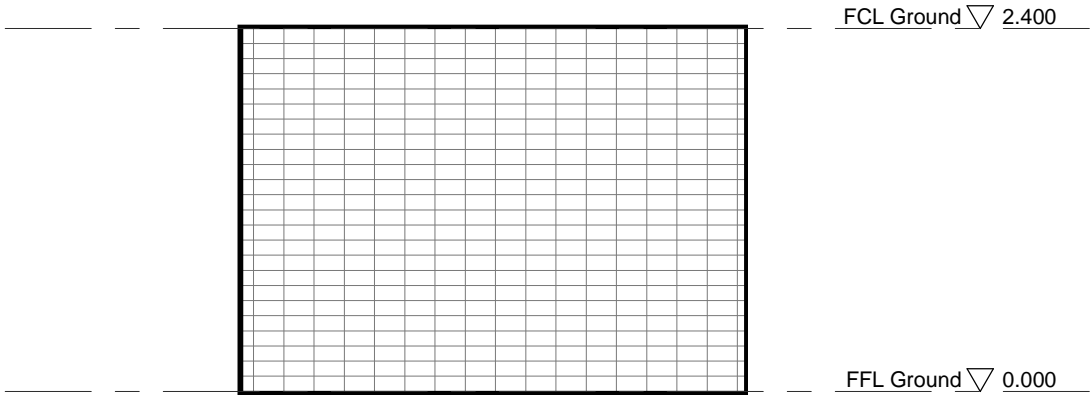
ELEVATION 1



ELEVATION 2



ELEVATION 3



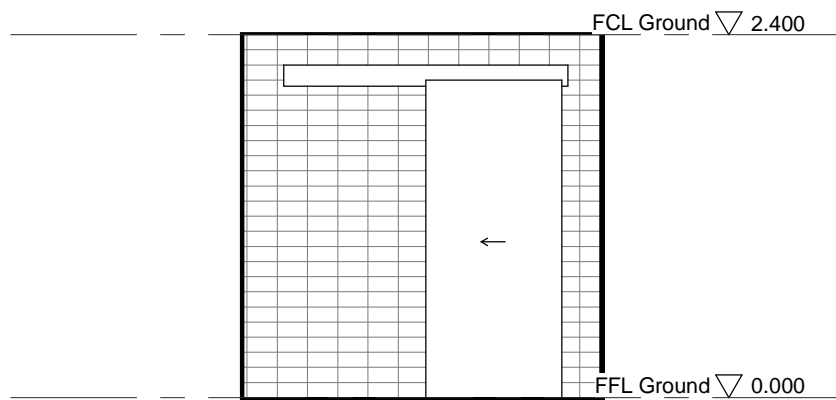
ELEVATION 4

NOTE: DO NOT SCALE OFF DRAWING

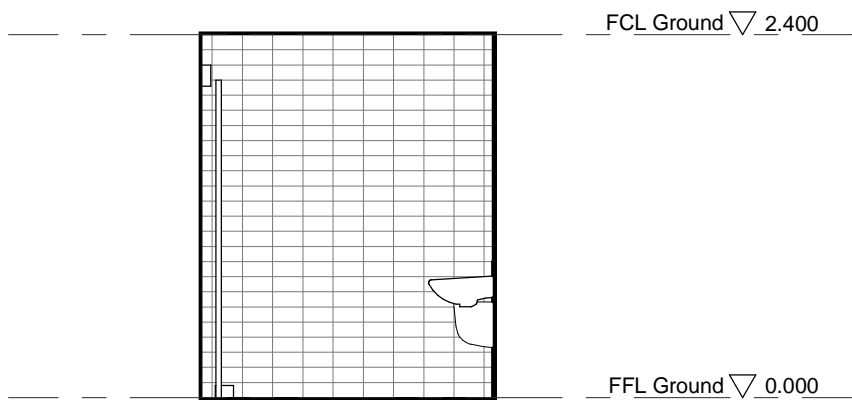
10/08/2021 1:52:38 PM

AMENDMENTS A 22/06/2021 INITIAL ISSUE B 23/07/2021 ISSUED FOR TENDER	ARCHITECT <div>EMA A</div> <div>Eric Martin & Associates 10/68 Jardine Street KINGSTON ACT 2604 Ph 02 6260 6395 Fax 02 6260 6413 emaa@emaa.com.au <u>Eric Martin Registered Architect</u> ACT 376 VIC 5150 NSW 5991 WA 1663 QLD 3391</div>	CLIENT HIGH COURT OF AUSTRALIA	PROJECT HIGH COURT OF AUSTRALIA LEVEL 1 PWDWC	CADFILE V:\Projects 2020\20017 High Court of Australia\I Tendering\20017 Level 1 HCA PWDWC TENDER.rvt						
			DRAWING TITLE	<table><tr><td>SCALE 1:50@A3</td><td>DRAWN PM</td></tr><tr><td>DATE 23/07/2021</td><td>ISSUE/ REVISION TENDER B</td></tr><tr><td>CHECKED EM</td><td>DWG No 20017-A300/B</td></tr></table>	SCALE 1:50@A3	DRAWN PM	DATE 23/07/2021	ISSUE/ REVISION TENDER B	CHECKED EM	DWG No 20017-A300/B
SCALE 1:50@A3	DRAWN PM									
DATE 23/07/2021	ISSUE/ REVISION TENDER B									
CHECKED EM	DWG No 20017-A300/B									
			DETAIL ELEVATIONS FEMALE REST ROOM EXISTING							

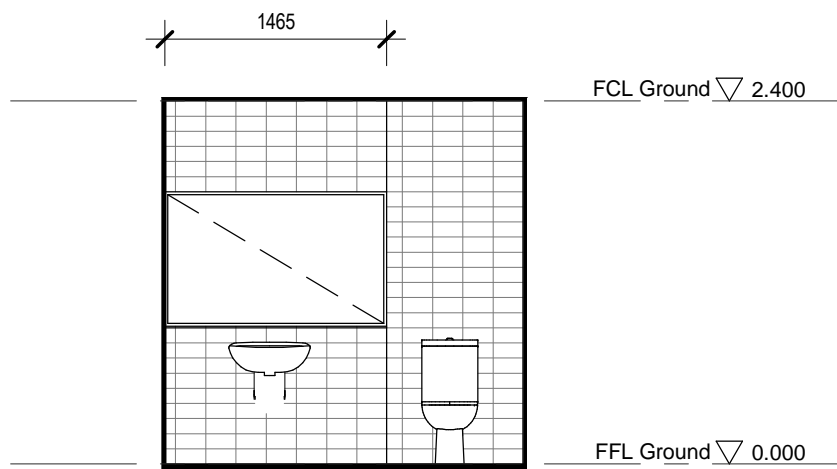
TENDER



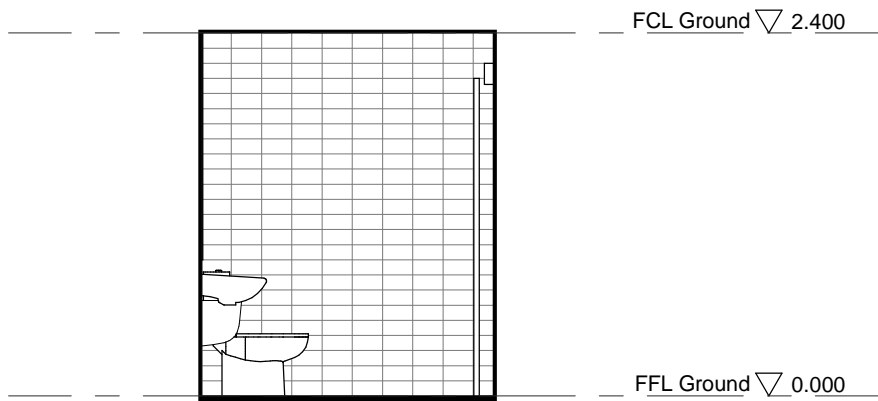
ELEVATION 1



ELEVATION 2



ELEVATION 3



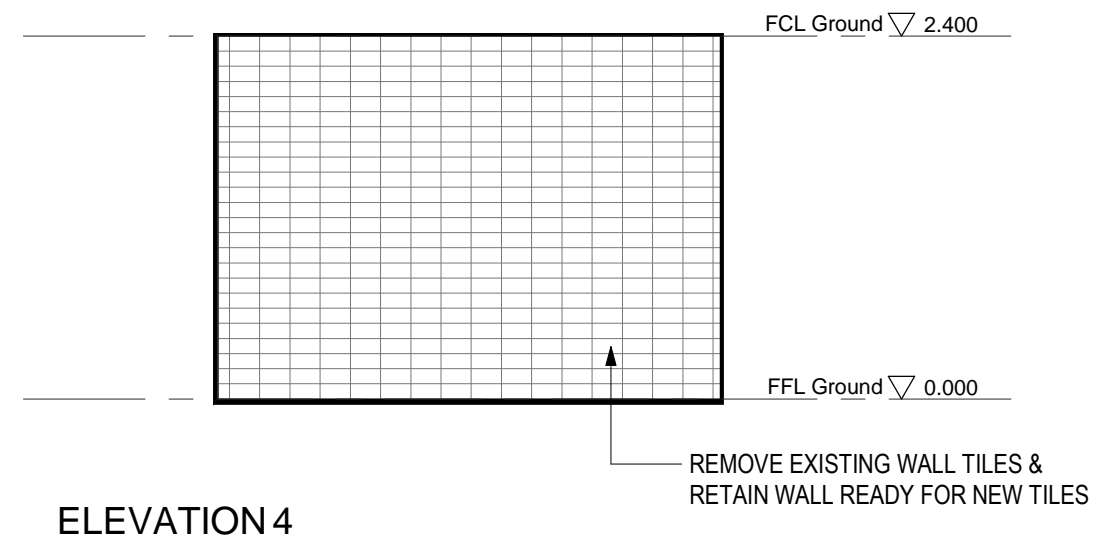
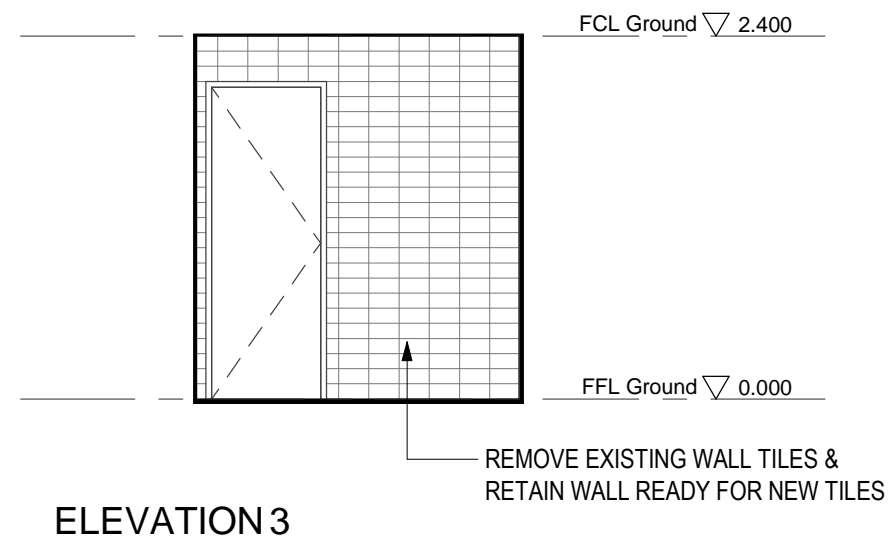
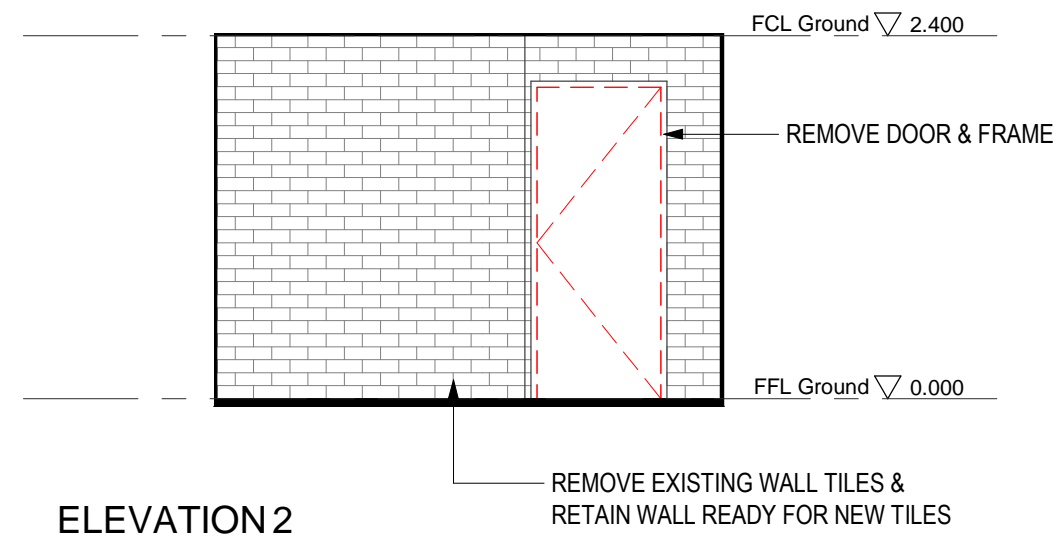
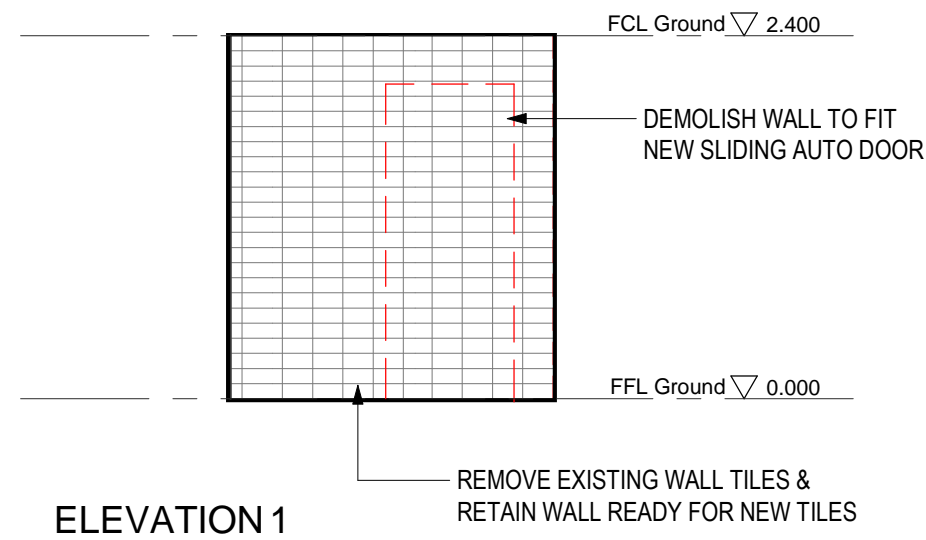
ELEVATION 4

NOTE: DO NOT SCALE OFF DRAWING

AMENDMENTS A 22/06/2021 INITIAL ISSUE B 23/07/2021 ISSUED FOR TENDER	ARCHITECT <div>EMAA</div> Eric Martin & Associates 10/68 Jardine Street KINGSTON ACT 2604 Ph 02 6260 6395 Fax 02 6260 6413 emaa@emaa.com.au <u>Eric Martin Registered Architect</u> ACT 376 VIC 5150 NSW 5991 WA 1663 QLD 3391	CLIENT HIGH COURT OF AUSTRALIA	PROJECT HIGH COURT OF AUSTRALIA LEVEL 1 PWDWC	CADFILE V:\Projects 2020\20017 High Court of Australia\I Tendering\20017 Level 1 HCA PWDWC TENDER.rvt	
			DRAWING	SCALE 1:50@A3	DRAWN PM
			TITLE DETAIL ELEVATIONS ACCESSIBLE TOILET EXISTING	DATE 23/07/2021	ISSUE/ REVISION TENDER B
				CHECKED EM	DWG No 20017-A301/B

10/08/2021 1:52:39 PM

TENDER



NOTE: DO NOT SCALE OFF DRAWING

AMENDMENTS
A 22/06/2021 INITIAL ISSUE
B 23/07/2021 ISSUED FOR TENDER

ARCHITECT
EMA
Eric Martin & Associates
10/68 Jardine Street KINGSTON ACT 2604
Ph 02 6260 6395 Fax 02 6260 6413
emaa@emaa.com.au
Eric Martin Registered Architect
ACT 376 VIC 5150 NSW 5991 WA 1663 QLD 3391

CLIENT
**HIGH COURT OF
AUSTRALIA**

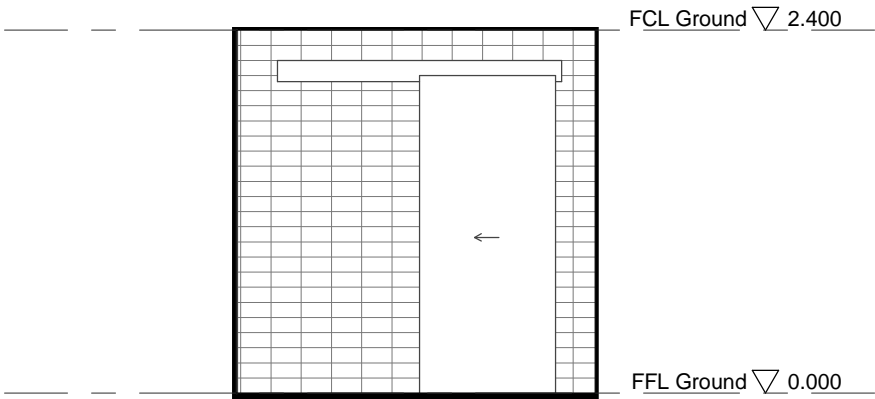
PROJECT
**HIGH COURT OF AUSTRALIA
LEVEL 1 PWDWC**

DRAWING
TITLE
**DETAIL ELEVATIONS FEMALE REST ROOM
DEMOLITION**

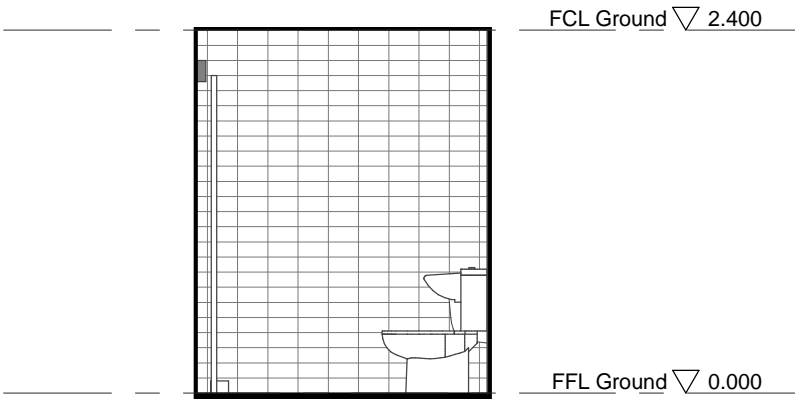
CADFILE V:\Projects 2020\20017 High Court of Australia\I Tendering\20017 Level 1 HCA PWDWC TENDER.rvt	
SCALE 1:50@A3	DRAWN PM
DATE 23/07/2021	ISSUE/ REVISION TENDER B
CHECKED EM	DWG No 20017-A305/B

10/08/2021 1:52:40 PM

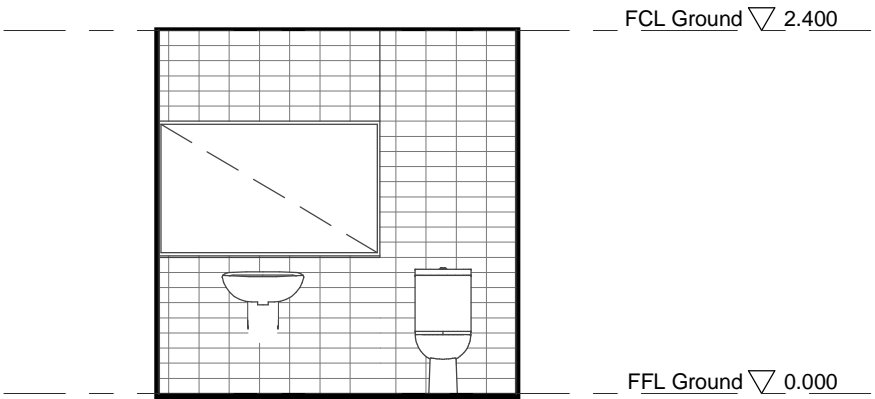
TENDER



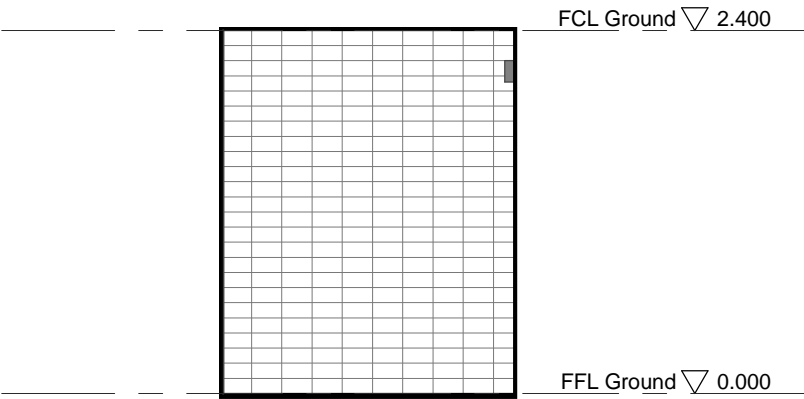
ELEVATION 1



ELEVATION 2



ELEVATION 3



ELEVATION 4

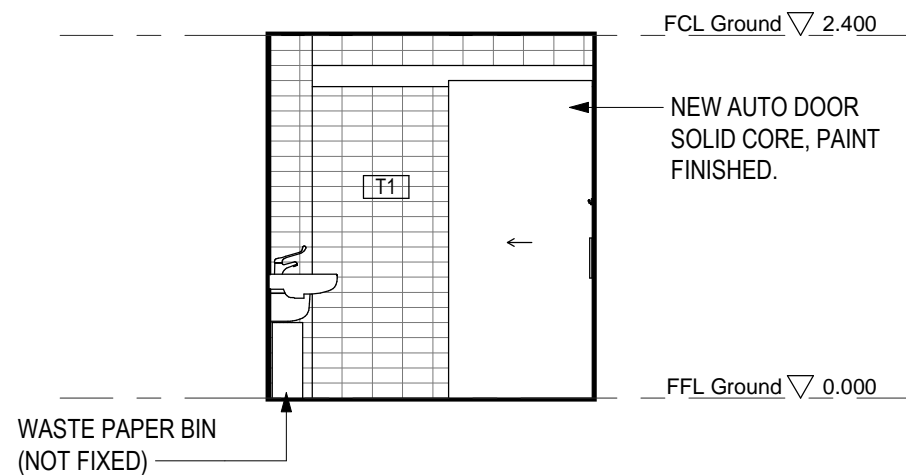
NOTE:
NO DEMOLITION WORK TO BE
CONDUCTED IN THIS ROOM

NOTE: DO NOT SCALE OFF DRAWING

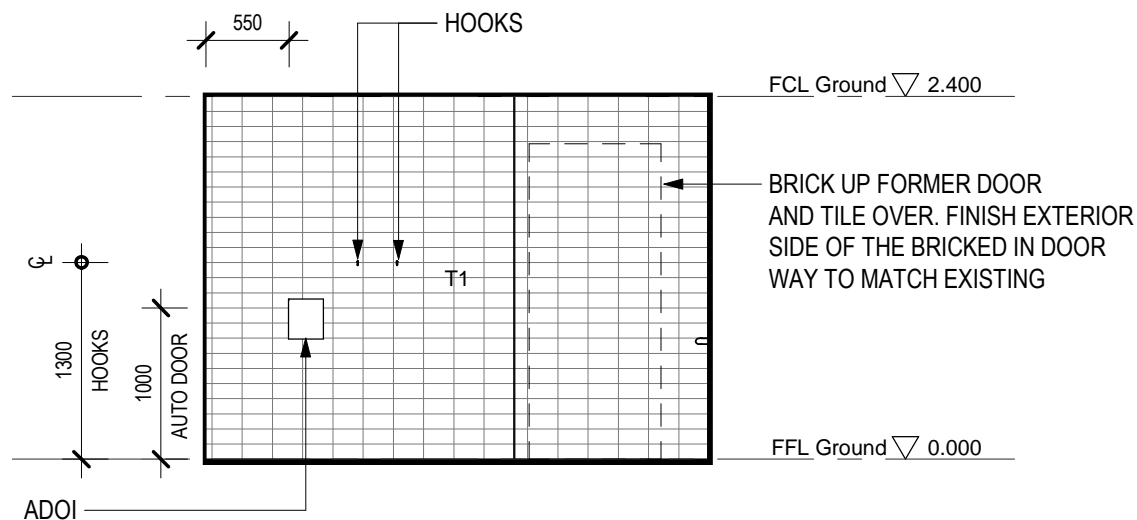
10/08/2021 1:52:41 PM

<div>AMENDMENTS</div> <div>A 22/06/2021 INITIAL ISSUE</div> <div>B 23/07/2021 ISSUED FOR TENDER</div>	<div>ARCHITECT</div> <div><div>EMA</div><div>A</div></div> <div>Eric Martin & Associates</div> <div>10/68 Jardine Street KINGSTON ACT 2604</div> <div>Ph 02 6260 6395 Fax 02 6260 6413</div> <div>emaa@emaa.com.au</div> <div>Eric Martin Registered Architect</div> <div>ACT 376 VIC 5150 NSW 5991 WA 1663 QLD 3391</div>	<div>CLIENT</div> <div>HIGH COURT OF AUSTRALIA</div>	<div>PROJECT</div> <div>HIGH COURT OF AUSTRALIA</div> <div>LEVEL 1 PWDWC</div> <div>DRAWING</div> <div>TITLE</div> <div>DETAIL ELEVATIONS PARENTS ROOM DEMOLITION</div>	<div>CADFILE</div> <div>V:\Projects 2020\20017 High Court of Australia\Tendering\20017 Level 1 HCA PWDWC TENDER.rvt</div> <div><div>SCALE</div><div>1:50@A3</div></div> <div><div>DRAWN</div><div>PM</div></div> <div><div>DATE</div><div>23/07/2021</div></div> <div><div>ISSUE/ REVISION</div><div>TENDER B</div></div> <div><div>CHECKED</div><div>EM</div></div> <div><div>DWG No</div><div>20017-A306/B</div></div>
---	--	--	---	--

TENDER



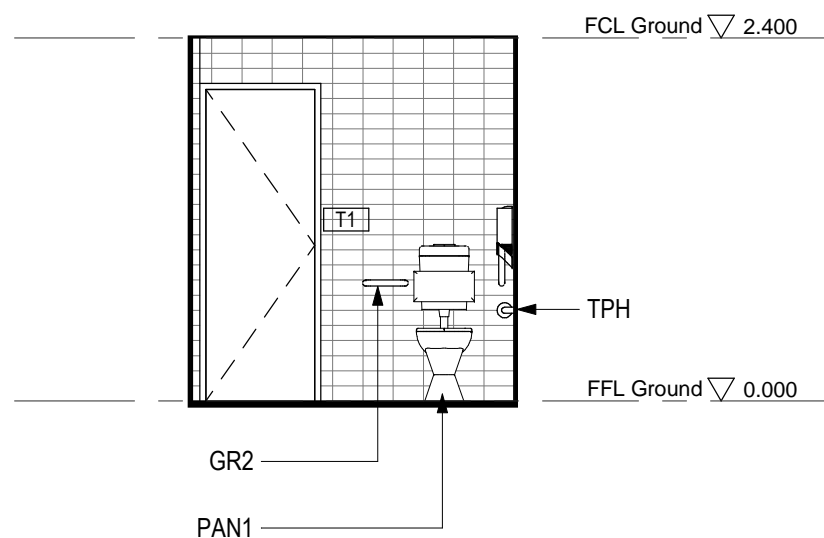
ELEVATION 1



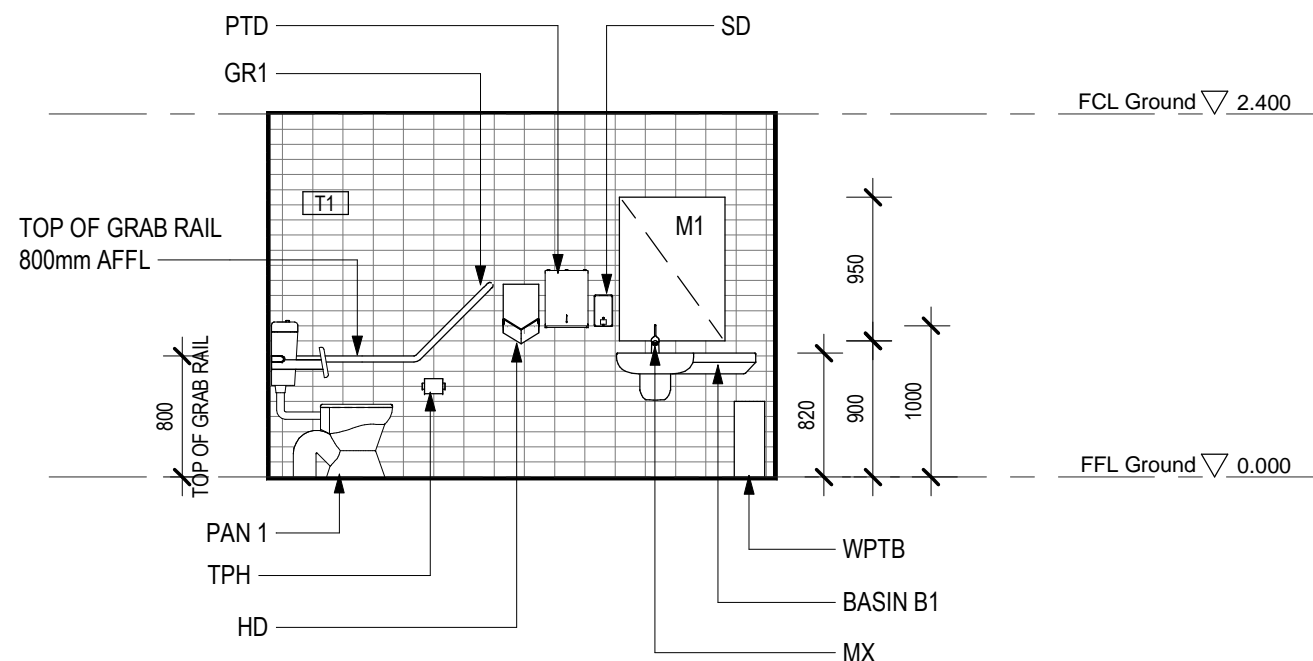
ELEVATION 2

NOTE:
FOR FIXTURES & FINISHES DETAILS
REFER TO DRAWING A/315 & SCHEDULE
OF FINISHES

NOTE:
ALL DETAILS TO COMPLY
WITH AS1428.1



ELEVATION 3



ELEVATION 4

NOTE: DO NOT SCALE OFF DRAWING

AMENDMENTS

- A 22/06/2021 INITIAL ISSUE
- B 06/07/2021 GENERAL AMENDMENTS
- C 23/07/2021 ISSUED FOR TENDER

ARCHITECT

EMA

Eric Martin & Associates
10/68 Jardine Street KINGSTON ACT 2604
Ph 02 6260 6395 Fax 02 6260 6413
emaa@emaa.com.au
Eric Martin Registered Architect
ACT 376 VIC 5150 NSW 5991 WA 1663 QLD 3391

CLIENT

**HIGH COURT OF
AUSTRALIA**

PROJECT

**HIGH COURT OF AUSTRALIA
LEVEL 1 PWDWC**

DRAWING

TITLE

DETAIL ELEVATIONS NEW PWDWC

CADFILE

V:\Projects 2020\20017 High Court of Australia\Tendering\20017 Level 1
HCA PWDWC TENDER.rvt

SCALE

1:50@A3

DRAWN

PM

DATE

23/07/2021

ISSUE/ REVISION

TENDER C

CHECKED

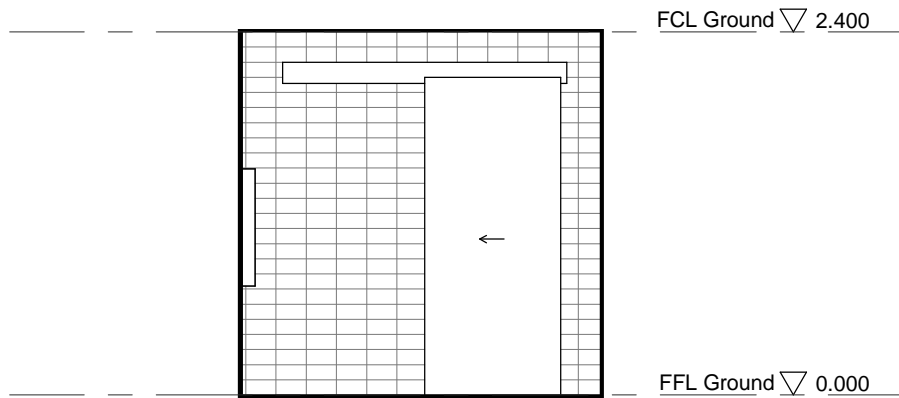
EM

DWG No

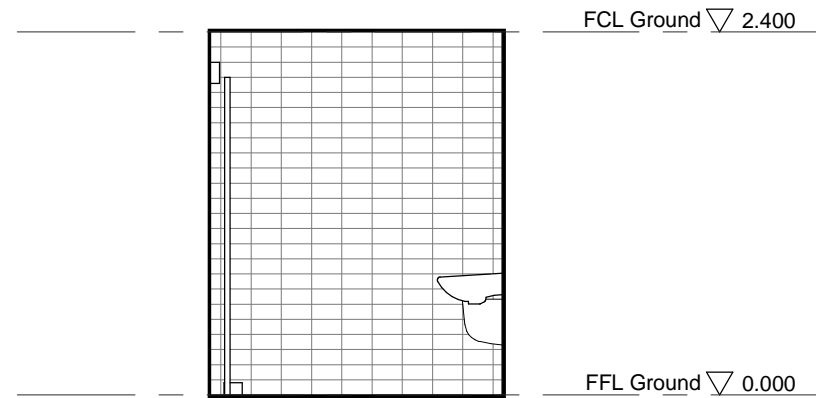
20017-A310/C

10/08/2021 1:52:42 PM

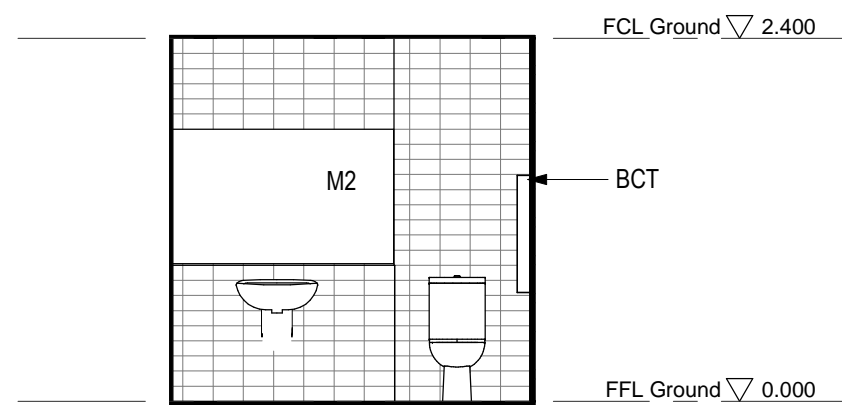
TENDER



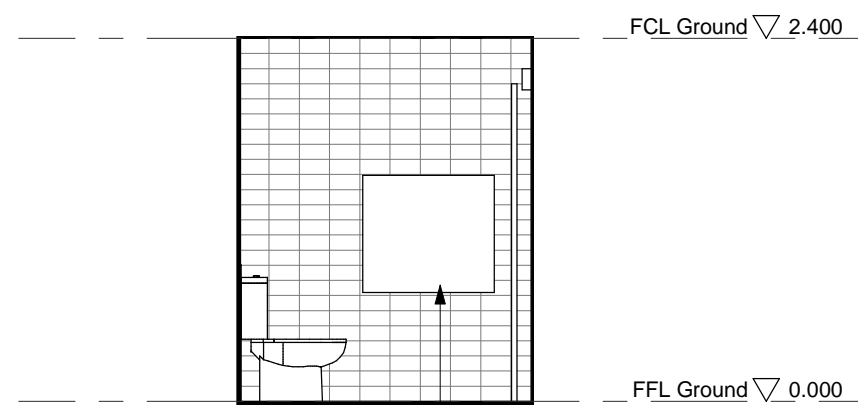
ELEVATION 1



ELEVATION 2



ELEVATION 3



ELEVATION 4


NOTE:
FOR FIXTURES & FINISHES DETAILS
REFER TO DRAWING A/315 & SCHEDULE
OF FINISHES

NOTE:
ALL FIXTURES IN THE REALLOCATED
PARENTS ROOM ARE TO REMAIN

NEW BABY CHANGE TABLE.
INSTALL AS PER AS1428.1

NOTE: DO NOT SCALE OFF DRAWING

10/08/2021 1:52:43 PM

AMENDMENTS A 22/06/2021 INITIAL ISSUE B 23/07/2021 ISSUED FOR TENDER	ARCHITECT  Eric Martin & Associates 10/68 Jardine Street KINGSTON ACT 2604 Ph 02 6260 6395 Fax 02 6260 6413 <email>emaa@emaa.com.au</email> <small>Eric Martin Registered Architect ACT 376 VIC 5150 NSW 5991 WA 1663 QLD 3391</small>	CLIENT HIGH COURT OF AUSTRALIA	PROJECT HIGH COURT OF AUSTRALIA LEVEL 1 PWDWC DRAWING TITLE DETAIL ELEVATIONS NEW PARENTS ROOM	CADFILE V:\Projects 2020\20017 High Court of Australia\I Tendering\20017 Level 1 HCA PWDWC TENDER.rvt	
				SCALE 1:50@A3	DRAWN PM
				DATE 23/07/2021	ISSUE/ REVISION TENDER B
				CHECKED EM	DWG No 20017-A311/B

TENDER

SAFETY IN DESIGN REPORT

ARE THERE ANY ADDITIONAL HAZARDS AND RISKS NOT NORMALLY ASSOCIATED WITH THE TYPE OF WORK DETAILS IN THE DOCUMENTATION?

YES ☒ NO ☐

NOTE: LIKELIHOOD - UNLIKELY, POSSIBLE, LIKELY, ALMOST CERTAIN.
SEVERTY - MINOR, LOW, MODERATE. EXTREME

SAFETY IN DESIGN REPORT - ARCHITECTURAL				
	RISK HAZARD	LIKELIHOOD OF RISK	CONSEQUENCES / SEVERITY	CONTROL MEASURES
2	ASBESTOS	POSSIBLE	HIGH	CONFIRM WITH BUILDING MANAGMENT WERE ASBESTOS HAS BEEN IDENTIFIED AND ADVISE BUILDING MANAGEMENT WHERE ASBESTOS HAS BEEN IDENTIFIED IN THE COURSE OF UNDERTAKING BUILDING WORKS
ARCHITECTURAL	CONDUCTING CONSTRUCTION WORK IN A BUILDING THAT WILL BE OPERATING	ALMOST CERTAIN	HIGH	COORDINATE WITH BUILDING MANAGEMENT TO CONFIRM PROCESS FOR ACCESSING SITE, REMOVING DEMOLISHED DEBRIS BRINGING INTO THE BUILDING NEW EQUIPMENT AND TO ALSO MINIMISE CONSTRUCTION NOISE

HAVE YOU AND THE FOLLOWING PROJECT CONSULTANTS IDENTIFIED ANY SAFETY RISKS ASSOCIATED WITH THE WORKS? IF SO, PROVIDE DETAILS.

YES ☐ NO ☒

NOTE: DO NOT SCALE OFF DRAWING

AMENDMENTS A 23/07/2021 ISSUED FOR TENDER	<div>ARCHITECT</div> <div>EMA A</div> <div>Eric Martin & Associates 10/68 Jardine Street KINGSTON ACT 2604 Ph 02 6260 6395 Fax 02 6260 6413 emaa@emaa.com.au <small>Eric Martin Registered Architect ACT 376 VIC 5150 NSW 5991 WA 1663 QLD 3391</small></div>	<div>CLIENT</div> <div>HIGH COURT OF AUSTRALIA</div>	<div>PROJECT</div> <div>HIGH COURT OF AUSTRALIA LEVEL 1 PWDWC</div> <div>DRAWING</div> <div>TITLE</div> <div>SAFETY IN DESIGN REPORT</div>	CADFILE <small>V:\Projects 2020\20017 High Court of Australia\I Tendering\20017 Level 1 HCA PWDWC TENDER.rvt</small>	
				SCALE 1:100 @A3	DRAWN PM
				DATE 23/07/2021	ISSUE/ REVISION TENDER A
				CHECKED EM	DWG No 20017-A999/A

10/08/2021 1:52:45 PM

TENDER

1. GENERAL SPECIFICATION NOTES

1.1 INFORMATION
THE CONTRACTOR IS TO FULLY INFORM THEMSELVES OF ALL ASPECTS OF THIS EXISTING INSTALLATION PRIOR TO TENDER & COMMENCEMENT OF CONSTRUCTION. UNDERTAKE A MANDATORY SITE INSPECTION TO ASSESS THE SCOPE OF DEMOLITION AND NEW WORKS.

1.2 CODES, RULES, PERMITS, FEES
ALL MATERIALS, SUPPLIES, AND ALL WORK INSTALLED SHALL COMPLY WITH THE CODES, STANDARDS, RULES AND REGULATIONS OF RELEVANT STATUTORY AUTHORITIES INCLUDING, BUT NOT NECESSARILY LIMITED TO:

- NATIONAL CONSTRUCTION CODE 2019
- AS 3000:2018 ELECTRICAL INSTALLATIONS (WIRING RULES)
- AS/NZS 2293 EMERGENCY LIGHTING AND EXIT SIGNS FOR BUILDINGS
- AS/NZS 3008 ELECTRICAL INSTALLATIONS - SELECTION OF CABLES
- AS 3017 ELECTRICAL INSTALLATIONS - TESTING GUIDELINES
- AS 4072 FIRE PENETRATIONS
- SUPPLY AUTHORITY REGULATIONS

MAKE ALL APPLICATIONS AND PAY ALL FEES REQUIRED TO COMPLY WITH RELEVANT AUTHORITY REQUIREMENTS, INCLUDING SELF-CERTIFICATION COSTS FOR ELECTRICAL INSPECTION.

1.3 DEFECTS LIABILITY
GUARANTEE ALL WORK AND MATERIALS AS TO QUALITY, WORKMANSHIP AND AGAINST DEFECTS, FOR A PERIOD OF TWELVE MONTHS FROM THE DATE OF ISSUE OF THE 'CERTIFICATE OF PRACTICAL COMPLETION'. DURING THIS PERIOD, PROMPTLY REPLACE ALL DEFECTIVE EQUIPMENT, FIXTURES AND MATERIALS AT NO ADDITIONAL COST.

1.4 PROVISIONS
PROVIDE THE FOLLOWING TO THE PROJECT MANAGER FOR REVIEW PRIOR TO COMMENCING INSTALLATION WORKS.

- LIGHTING TECHNICAL DATA

1.5 WORKMANSHIP
ALL WORKMANSHIP AND MATERIALS SHALL BE TO THE SATISFACTION OF THE PROJECT MANAGER. ALL MATERIALS SHALL BE NEW UNLESS OTHERWISE NOTED. ANY MATERIALS OR WORKMANSHIP, WHICH ARE CONSIDERED INFERIOR OR NON-CONFORMING BY THE PROJECT MANAGER SHALL BE REPLACED AT THE CONTRACTOR'S COST.

1.6 LICENSED ELECTRICAL CONTRACTOR
ALL WORKS SHALL BE UNDERTAKEN BY LICENSED ELECTRICAL CONTRACTOR'S, QUALIFIED AND EXPERIENCED IN THE TYPE OF WORK REQUIRED FOR THIS PROJECT.

1.7 RELATED ELECTRICAL WORKS
CO-ORDINATE AND CO-OPERATE WITH THE BUILDER AND OTHER TRADES (MECHANICAL, HYDRAULIC, ETC.) AS REQUIRED.

1.8 BACKGROUND
ELECTRICAL WORKS REQUIRED FOR THE REFURBISHMENT OF THE HIGH COURT TOILET AMENITY UPGRADE INCLUDE:

- ISOLATION, DISCONNECTION AND REMOVAL OF ALL ELECTRICAL SERVICES NOTED ON THE DRAWINGS.
- FINAL SUB-CIRCUITS TO ALL NOMINATED SERVICES.
- NEW GENERAL LIGHTING AS DOCUMENTED ON THE DRAWINGS.
- GENERAL POWER AS DOCUMENTED ON THE DRAWINGS.
- TESTING AND COMMISSIONING
- PROVISION OF AS BUILT DOCUMENTATION

A CONCURRENT PROJECT TO UPGRADE BUILDING EMERGENCY LIGHTING IS BEING UNDERTAKEN. NEW UNSWITCHED ACTIVE AND EMERGENCY LIGHTING TEST SWITCH SHALL BE PROVIDED BY THAT PROJECT.

1.9 SCOPE OF WORK
THE SCOPE OF WORK INCLUDES THE DEMOLITION, SUPPLY, DELIVERY, INSTALLATION, TESTING AND SETTING TO WORK OF THE ELECTRICAL LIGHTING AND POWER SYSTEMS AS SHOWN ON THE DRAWINGS AND NOMINATED IN THE SPECIFICATION. SUPPLY ALL REQUIRED MATERIALS UNLESS OTHERWISE SPECIFIED. THE SCOPE OF WORK INCLUDES BUT IS NOT NECESSARILY LIMITED TO THE FOLLOWING:

1.9.1 LIGHTING

- PROVIDE NEW LIGHTING AS SPECIFIED ON THE DRAWINGS. NEW LIGHTING IS TO MAKE USE OF EXISTING CUTOUTS AND SUPPLIES WHERE AVAILABLE.
- ALTERNATE LIGHT FITTINGS WILL NOT BE ACCEPTED WITHOUT APPROVAL FROM THE PROJECT MANAGER OR ELECTRICAL

ENGINEER. PROVIDE PRODUCT SHEETS FOR ALL ALTERNATIVE FIXTURES.

- ALL LIGHTING CIRCUITS MODIFIED AND NEW, SHALL BE RCD PROTECTED. ENSURE THAT THERE ARE A SUITABLE NUMBER OF LUMINAIRES ON EACH CIRCUIT SO AS TO AVOID FALSE RCD TRIPPING DUE TO EARTH LEAKAGE FROM THE BALLAST/LUMINAIRE.
- MAXIMUM EARTH LEAKAGE CURRENT PER BALLAST FOR ALL NEW LUMINAIRES SHALL BE LESS THAN 0.3 mA.
- COORDINATE FINAL SET-OUTS FOR LIGHT FIXTURES FROM ON-SITE DIMENSIONED SETOUTS. COORDINATE ALL LUMINAIRE INSTALLATIONS WITH CEILING SETOUTS.

1.9.2 LIGHTING CONTROLS

- PROVIDE MOTION DETECTION CONTROLS TO LIGHTING AS NOMINATED ON DRAWINGS.
- CONNECT TO EXISTING LIGHT SWITCH.
- ALL LIGHT SWITCHES SHALL HAVE CIRCUIT REFERENCE MARKED ON THE BACK OF THE FACEPLATES IN PERMANENT MARKER IF NOT ALREADY DONE.

1.9.3 GENERAL POWER

- SUPPLY AND INSTALL NEW POWER CONNECTIONS AS SHOWN ON THE DRAWINGS.
- RETICULATE POWER GENERALLY IN CEILING VOID, AND TERMINATED WITHIN THE EXISTING DISTRIBUTION BOARD DB-1A.
- PROVIDE CIRCUIT PROTECTION COMPLIANT WITH AS 3000. PROVIDE RCD PROTECTION WHERE REQUIRED UNDER THE AUSTRALIAN STANDARDS.
- TEST AND CERTIFY THE COMPLETE SYSTEM

1.9.4 OUTLETS AND ACCESSORIES

- SUPPLY, INSTALL AND CONNECT ALL NEW POWER OUTLETS AND ACCESSORIES AS SHOWN.
- ALL POWER OUTLETS SHALL HAVE CIRCUIT REFERENCE LABELS WITH BLACK LETTERS ON WHITE BACKGROUND FIXED BY INTEGRAL CIRCUIT DESIGNATION LABEL WINDOW ON SWITCH PLATE COVER. LABELS SHALL REFER TO THE SWITCHBOARD ORIGIN AND CIRCUIT BREAKER NUMBER. NEW SWITCHBOARD LABELS SHALL SHOW ID AND ORIGIN ON INTERNAL ESCUTCHEON. ALSO LABEL GPO WITH PERMANENT MARKER OR OTHER MEANS WHICH SHALL BE VISIBLE WHEN COVER PLATE IS REMOVED.
- PROVIDE AND INSTALL CIRCUIT BREAKERS INCLUDING 30 mA RCD'S TO ALL GENERAL LIGHTING AND POWER CIRCUITS.
- COORDINATE OUTLETS AND CONNECTIONS TO DEDICATED EQUIPMENT WITH THE INSTALLER OF THAT EQUIPMENT. (AUTO DOOR)

1.9.5 EARTHING

- THE INSTALLATION BY THE CONTRACTOR SHALL BE EARTHED.
- EARTHING SHALL BE CARRIED OUT IN ACCORDANCE WITH THE RELEVANT SUPPLY AUTHORITY REQUIREMENTS AND AS/NZS 3000 AND AS/CA S009.
- REUSE THE EXISTING MEN POINT FOR THE BUILDING.

1.9.6 CABLE SELECTION

- SUPPLY, INSTALL AND CONNECT ALL NEW POWER AND LIGHTING CABLING NECESSARY TO COMPLETE THE INSTALLATION.
- ALL POWER AND LIGHTING CABLES SHALL BE THERMOPLASTIC INSULATED (T.P.I) AND SHEATHED (T.P.S) 0.6/1.0 kV GRADE AS APPLICABLE WITH AS 5000.1. INSULATION SHALL BE V75 GRADE UNLESS OTHERWISE NOTED.
- LIGHTING SUB-CIRCUITS: 2.5 mm² MIN.
- GENERAL PURPOSE POWER CIRCUITS: MIN 2.5 mm².
- CONTROL CIRCUITS ETC: MIN 2.5 mm².
- FLEXIBLE CORDS: MIN 30/0.25 mm²
- SEGREGATE LV POWER CABLING AND COMMUNICATIONS/CONTROL CABLING TO AS 3000 AND AS/CA S009. PARTICULAR ATTENTION NEEDS TO BE PAID TO RETICULATION OF CABLING WITHIN SERVICES COLUMNS AND WORKSTATION SCREENS, TO ENSURE THAT SEGREGATION AND SEPARATION BETWEEN POWER AND COMMUNICATIONS CABLING IS MAINTAINED.
- ALL CABLING SHALL BE CONCEALED IN CEILING SPACES OR WALLS UNLESS INDICATED OR APPROVED OTHERWISE.
- ALL CABLING INDICATED OR APPROVED TO NOT BE IN A CONCEALED CEILING SPACE ARE TO BE ENCASED IN CONDUIT OR DUCT AND SECURELY MOUNTED IN FLAT FORMATION AGAINST A WALL OR SLAB IN ACCORDANCE WITH AS 3008.

1.9.7 TESTING AND COMMISSIONING

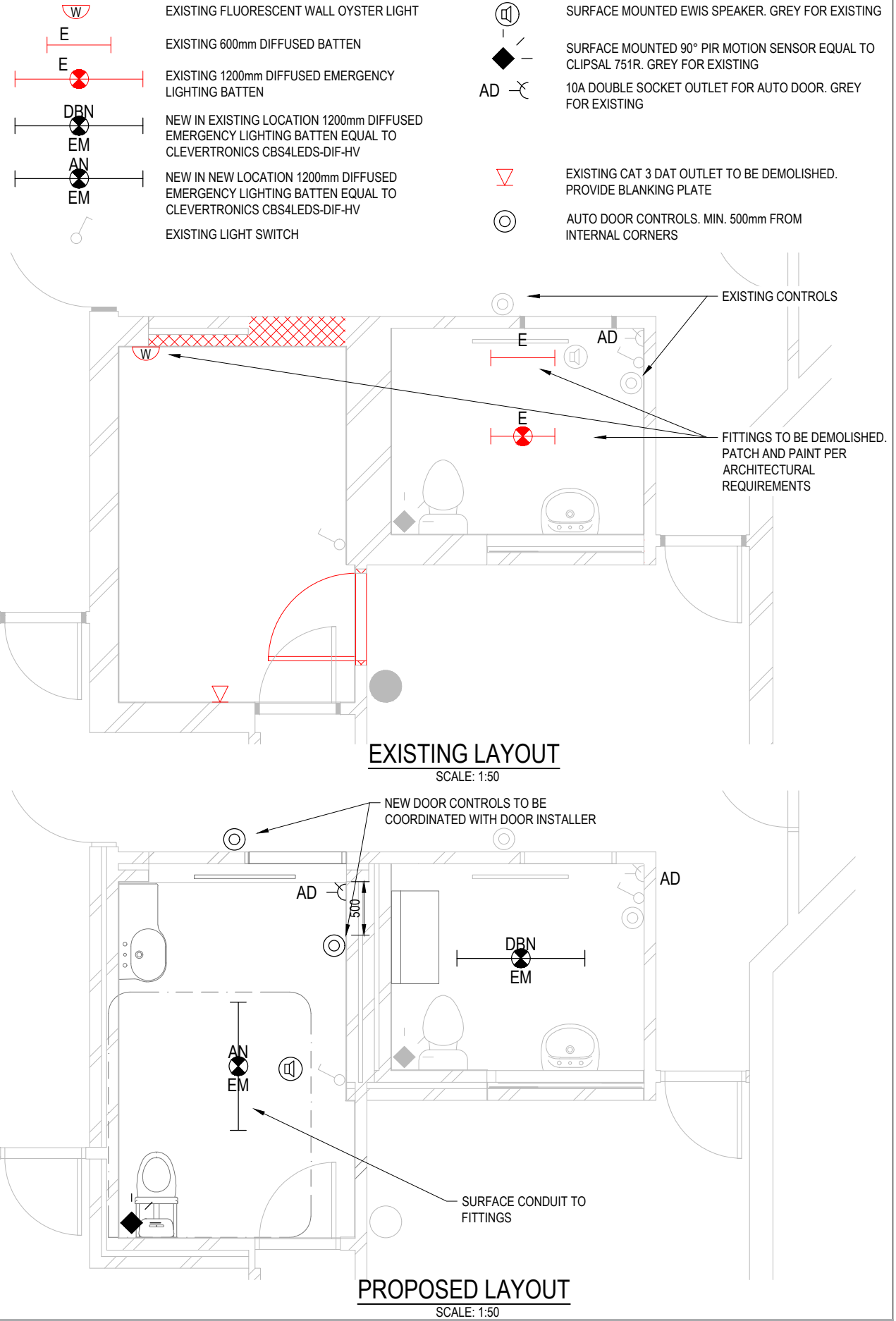
- CARRY OUT TESTING, OPERATING AND ADJUSTING THE SYSTEM AND EQUIPMENT, AND FOR FULLY INSTRUCTING THE PROJECT MANAGER OR THEIR REPRESENTATIVE IN THE OPERATION OF THE SYSTEM AND EQUIPMENT. PROVIDE FULL OPERATOR'S MANUAL.

- DEMONSTRATE TO THE PROJECT MANAGER AND NOMINATED REPRESENTATIVES THE FULL OPERATION OF THE LIGHTING CONTROL SYSTEM (INCLUDING ALL PRE-SETS AND CONTROLS OUTLINED WITHIN THIS DOCUMENT AND ALL MOTION SENSOR / TIMER CONTROLS PRESCRIBED) IN ACCORDANCE WITH THE PERFORMANCE REQUIREMENTS OUTLINED ON THE DRAWINGS.
- SUBMIT TEST REPORTS. PROVIDE THE PROJECT MANAGER WITH ALL TEST RESULTS, BOUND, FOR REVIEW. THE CERTIFICATE OF PRACTICAL COMPLETION WILL ONLY BE SIGNED AFTER THE COMPLETE TEST REPORTS HAVE BEEN REVIEWED. INCLUDE A HARD AND SOFT COPY OF THE FULL TEST REPORTS IN THE OPERATION AND MAINTENANCE MANUALS.
- CARRY OUT TESTING IN ACCORDANCE WITH AS 3000 CLAUSE 8.3 & 8.33 MANDATORY TESTS 8.3.10. OPERATION OF RCD'S.

1.9.8 AS-BUILT HARD COPY DRAWINGS AND MAINTENANCE MANUALS

- PROVIDE A FULL SET AND A 'DWG' (AUTOCAD LATEST VERSION) SET ON DISK OF AS-BUILT DRAWINGS, TO THE SATISFACTION OF THE PROJECT MANAGER, WITHIN 7 DAYS OF PRACTICAL COMPLETION. THE AS- BUILT DRAWINGS SHALL COMPREHENSIVELY REFLECT DETAILS OF ALL INSTALLED SYSTEMS AND COMPONENTS, AS DETAILED IN THE SCOPE OF WORK.
- PROVIDE TWO SETS OF OPERATION AND MAINTENANCE MANUALS. THE AIM OF THESE BEING TO PROVIDE A DETAILED UNDERSTANDING OF THE ITEMS OF EQUIPMENT AND ITS OPERATION, AN AID FOR TRAINING OF OPERATORS, A REFERENCE FOR FAULT DIAGNOSIS AND A FRAMEWORK FOR PREVENTIVE AND BREAKDOWN MAINTENANCE. THE MANUALS SHALL INCLUDE, AS A MINIMUM:

 - NAME, ADDRESS, TELEPHONE AND FACSIMILE NUMBERS OF THE MANUFACTURER AND SUPPLIER OF ITEMS OF EQUIPMENT INSTALLED, TOGETHER WITH CATALOGUE LIST NUMBERS.
 - INCLUDE SUCH DETAILS FOR ALL CONSULTANTS AND CONTRACTORS INVOLVED IN THE DESIGN AND CONSTRUCTION PHASES
 - TECHNICAL DESCRIPTION AND MODES OF OPERATION OF THE SYSTEMS INSTALLED.
 - PRODUCT LITERATURE FOR THE SYSTEMS INSTALLED AND CONTACT DETAILS FOR SUPPLIERS AND MANUFACTURERS' OF THESE SYSTEMS.
 - CONTROL AND SWITCHING SEQUENCES AND FLOW DIAGRAMS FOR SYSTEMS INSTALLED, INCLUDING SAFETY FEATURES. ALSO PROCEDURES FOR OPERATING AND ADJUSTING CONTROL SYSTEMS.
 - MANUFACTURERS' OPERATIONAL AND SAFETY LITERATURE, AS APPROPRIATE.
 - EMERGENCY MAINTENANCE PROCEDURES, INCLUDING TELEPHONE NUMBERS FOR EMERGENCY SERVICES, AND AFTER HOURS CONTACTS FOR SUPPLIERS AND CONTRACTORS AND PROCEDURES FOR FAULT FINDING.
 - STATUTORY CERTIFICATES OF COMPLIANCE FOR ALL ELECTRICAL AND COMMUNICATIONS WORK, COPIES OF MANUFACTURERS' WARRANTIES, CERTIFICATES FROM AUTHORITIES AND UTILITIES, PRODUCT CERTIFICATION, COPIES OF TEST CERTIFICATES, ETC.
 - AS-BUILT DRAWINGS, SHOP DRAWINGS, SYSTEM SCHEMATICS ETC.
 - COMMISSIONING RECORDS.



Rev	Description	Checked	Approved	Date
1	FOR TENDER	ER	TL	12.08.21
0	FOR TENDER	ER	TL	09.08.21
Author C. PEIRIS Drafting Check Designer C. PEIRIS Design Check T. LITTLE				



Level 7, 16 Marcus Clarke Street
Canberra ACT 2601 Australia
GPO Box 1877 Canberra ACT 2601
T 61 2 6113 3200 F 61 2 6113 3299
E cbrmail@ghd.com W www.ghd.com



Project No.
12552620

Client HIGH COURT OF AUSTRALIA

Project GROUND FLOOR PWD WC

Status TENDER

Drawing Title
ELECTRICAL SERVICES
DEMO AND PROPOSED LAYOUTS

Drawing No.
12552620-E001

Size
A3

Rev
1

STATUS

FOR TENDER

NOTES

AMENDMENTS

REV	DESCRIPTION	DATE
1	FOR TENDER	02.07.2021
2	FOR TENDER	10.08.2021

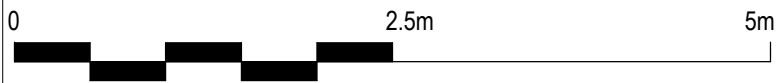
Copenhagen
London
Sydney
Hong Kong
New York

8, 9 Castlereagh St.
Sydney, NSW, 2000, Australia
ABN 50 001 189 037
t : +61 / 02 9967 2200
e : info@steensenvarming.com

STEENSEN VARMING

PROJECT
HIGH COURT OF AUSTRALIA
AMENITIES UPGRADE

DRAWING TITLE
MECHANICAL SERVICES
GROUND LEVEL - FLOOR PLAN AND
DEMOLITION PLAN



A1

SUITABILITY DRAWN DESIGNED CHECKED

IR FS DM

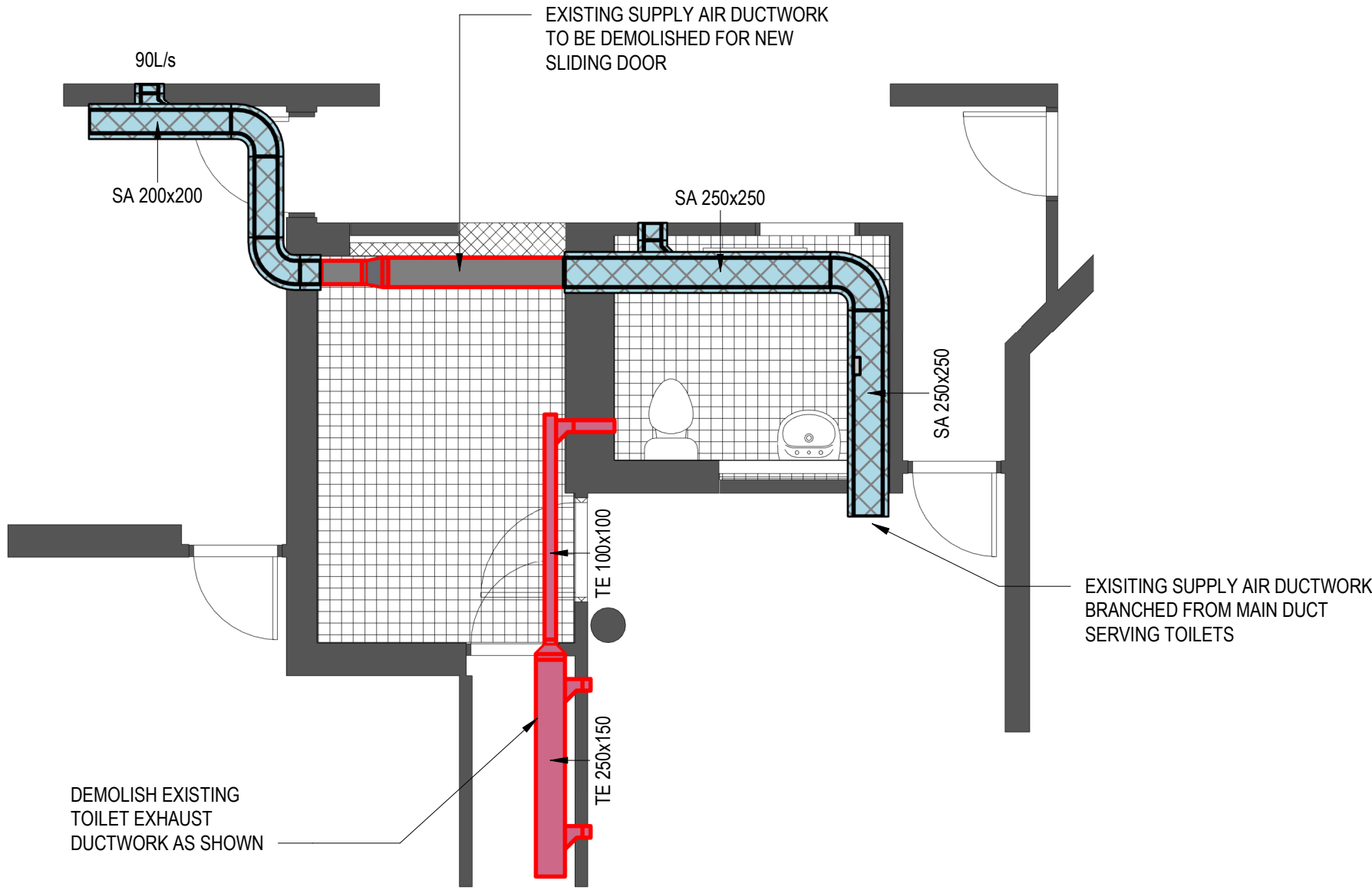
APPROVED SCALE NORTHPOINT

DM 1 : 50

PROJECT No. DRAWING No. REVISION

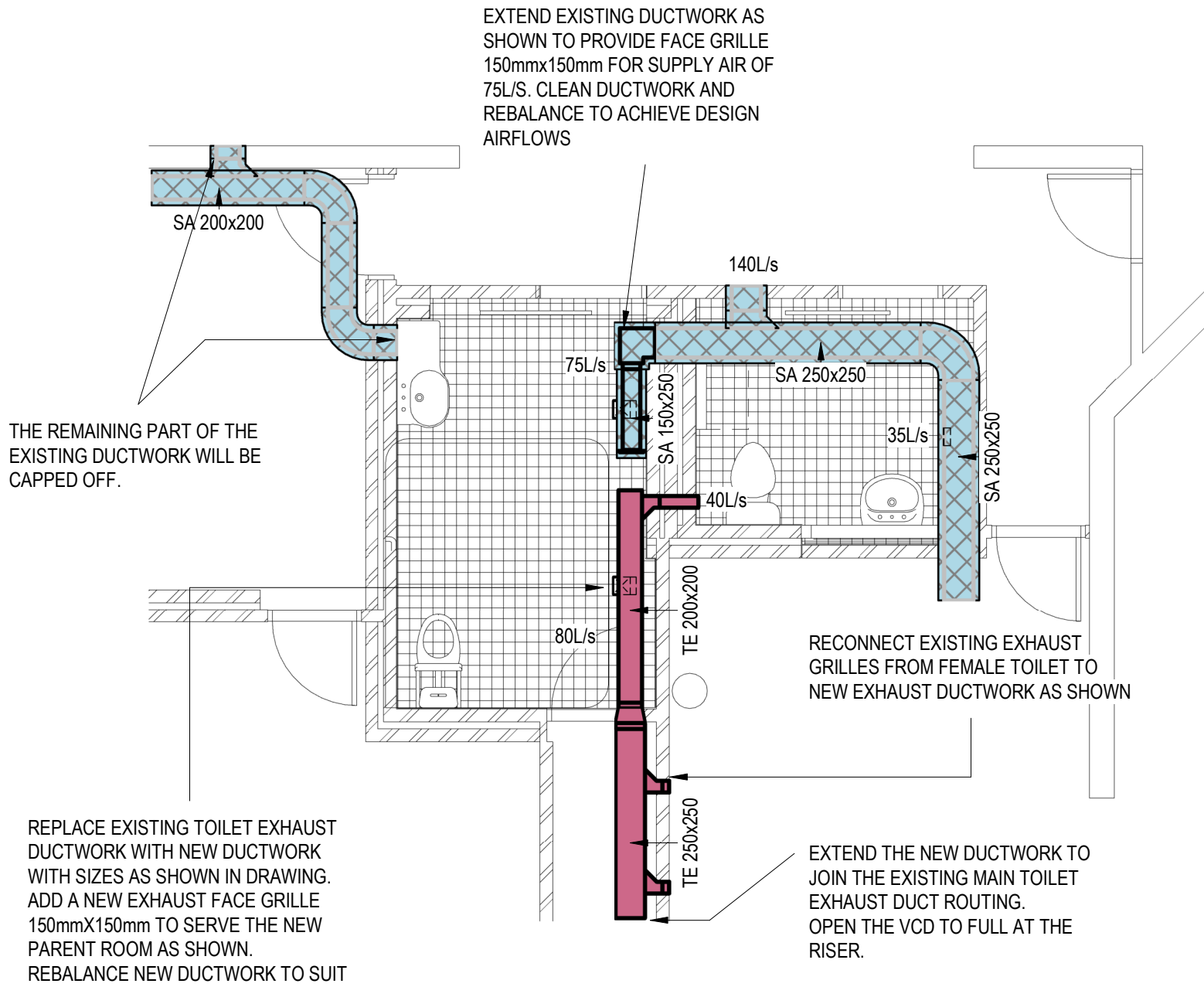
207028-SV-XX-00-DR-M-2000

2



GROUND LEVEL - DEMOLITION

2



GROUND LEVEL - FLOOR PLAN

1

STATUS

FOR TENDER

NOTES

AMENDMENTS		
REV	DESCRIPTION	DATE
1	FOR TENDER	02.07.2021

Copenhagen
London
Sydney
Hong Kong
New York

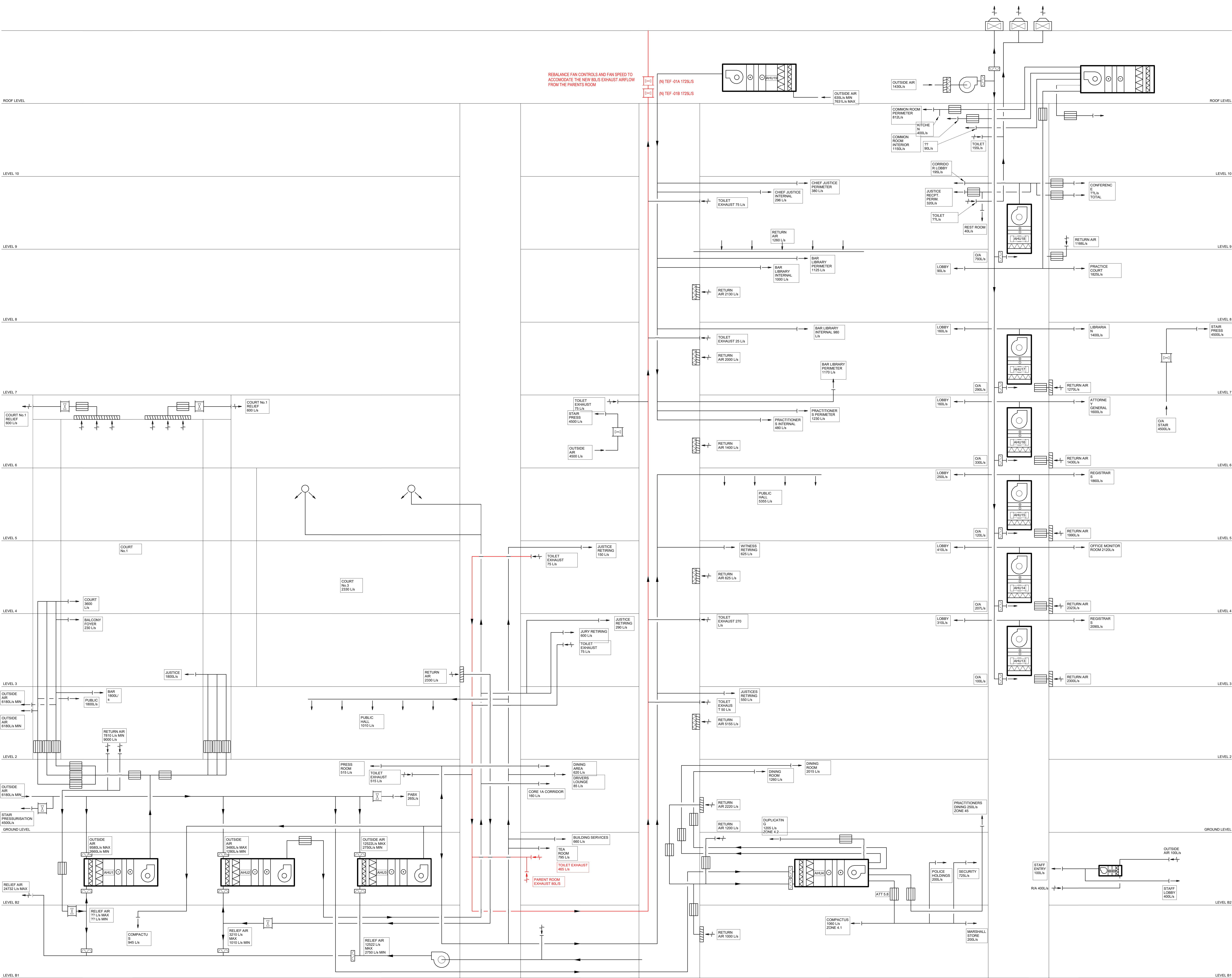
8, 9 Castlereagh St.
Sydney, NSW, 2000, Australia
ABN 50 001 189 037
t : +61 / 02 9967 2200
e : info@steensenvarming.com

STEENSEN VARMING

PROJECT
HIGH COURT OF AUSTRALIA
AMENITIES UPGRADE

DRAWING TITLE
MECHANICAL SERVICES
AIR SCHEMATIC

0			
SUITABILITY	DRAWN	DESIGNED	CHECKED
	IR	FS	DM
APPROVED	SCALE	NORTHPOINT	
DM	1 : 1		
PROJECT No.	DRAWING No.	REVISION	
207028-SV-XX-DR-M-8000		1	



When I'm working on a problem,
I never think about beauty. I think
only how to solve the problem. But
when I have finished, if the solution
is not beautiful, I know it is wrong.
Richard Buckminster Fuller

Mechanical Engineering
Lighting Design
Sustainable Design
Electrical Engineering

Copenhagen
London
Sydney
Hong Kong
New York

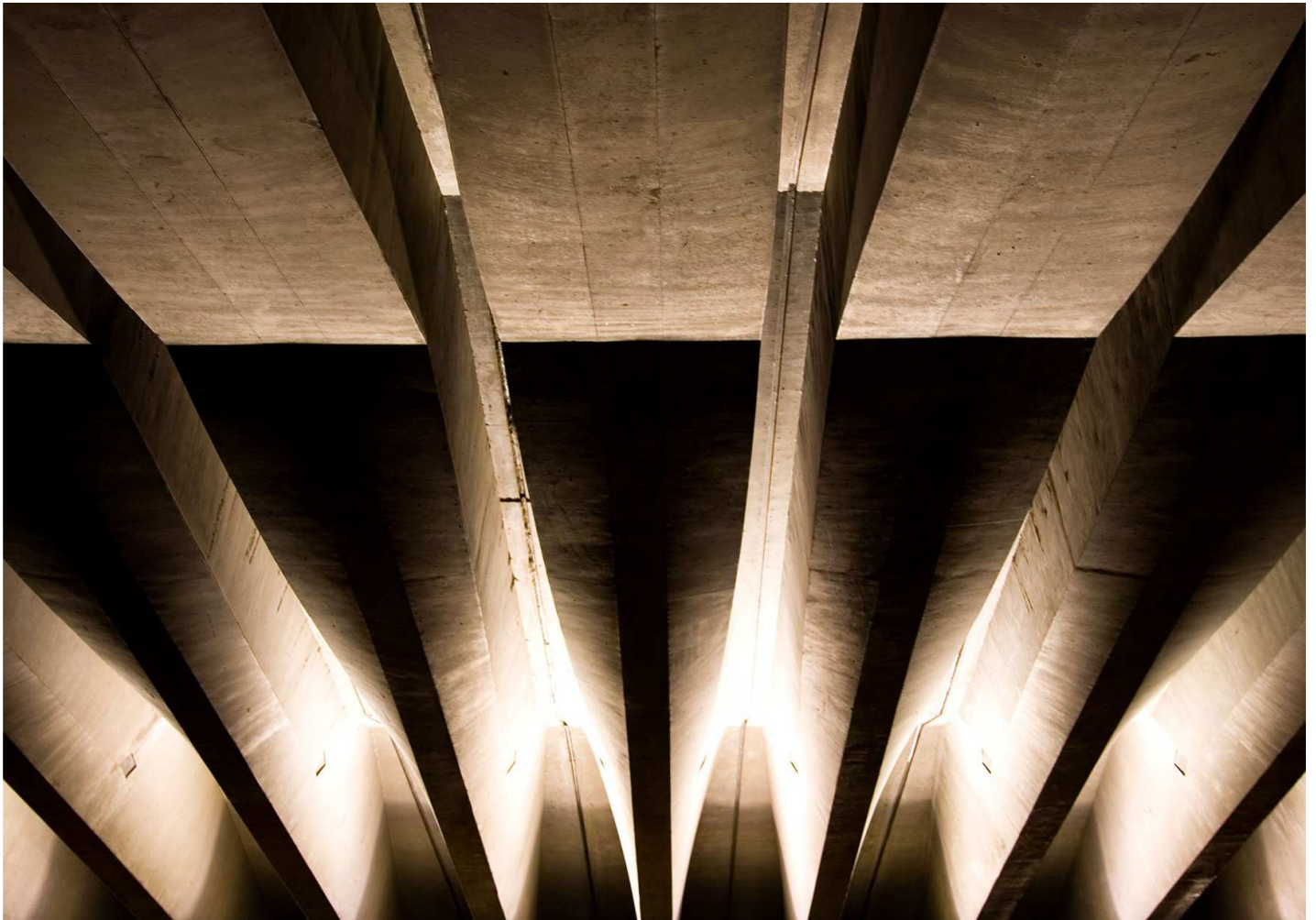
GF 1, 17 Moore Street
Canberra, ACT, 2601, Australia
ABN 50 001 189 037
t : +61 / 02 6230 0502
e : info@steensenvarming.com

MECHANICAL ENGINEERING

STEENSEN VARMING



High Court of Australia – Amenities Upgrade Performance Specification



When I'm working on a problem,
I never think about beauty. I think
only how to solve the problem. But
when I have finished, if the solution
is not beautiful, I know it is wrong.
Richard Buckminster Fuller

Mechanical Engineering
Lighting Design
Sustainable Design
Electrical Engineering

Copenhagen
London
Sydney
Hong Kong
New York

GF 1, 17 Moore Street
Canberra, ACT, 2601, Australia
ABN 50 001 189 037
t : +61 / 02 6230 0502
e : info@steensenvarming.com

STEENSEN VARMING

Document Revision and Status

Date	Rev	Issue	Notes	Checked	Approved
02-07-2021	1	For Tender		DM	FS

Canberra July 2nd, 2021
Ref. No. 207028sp001

Faraan Shareef
Senior Mechanical Engineer

faraan.shareef@steensenvarming.com
(02) 9967 2200

Disclaimers and Caveats:

Copyright © 2021, by Steensen Varming Pty Ltd.

All rights reserved. No part of this report may be reproduced or distributed in any form or by any means, or stored in a database or retrieval system, without the prior written permission of Steensen Varming Pty Ltd.

This document is confidential and contains privileged information regarding existing and proposed services for the Building. The information contained in the documents is not to be given to or discussed with anyone other than those persons who are privileged to view the information. Privacy protection control systems designed to ensure the highest security standards and confidentiality are to be implemented. You should only re-transmit, distribute or commercialise the material if you are authorised to do so.

When I'm working on a problem,
I never think about beauty. I think
only how to solve the problem. But
when I have finished, if the solution
is not beautiful, I know it is wrong.
Richard Buckminster Fuller

Mechanical Engineering
Lighting Design
Sustainable Design
Electrical Engineering

Copenhagen
London
Sydney
Hong Kong
New York

GF 1, 17 Moore Street
Canberra, ACT, 2601, Australia
ABN 50 001 189 037
t : +61 / 02 6230 0502
e : info@steensenvarming.com

STEENSEN VARMING

Table of Contents

1.0	General	4
1.1	The project	4
1.1.1	Description of the project	4
1.1.2	Description of the existing mechanical system	4
1.1.3	Redundant Equipment	7
2.0	Project Parties	8
2.1	Contractor	8
2.2	Mechanical Services Contractor	8
2.3	Principal	8
3.0	Mechanical Services Works	9
3.1	Scope of Works	9
3.2	Basis of the Mechanical Services Performance Specification	9
3.3	Scope of Mechanical Services	9
3.4	Other Trades	10
3.4.1	Building Trade	10
	Standards and Authorities	10
3.5	Documentation	11
3.5.1	General Requirements	11
3.6	Equipment	11
3.7	Grilles and Diffusers	11

When I'm working on a problem,
I never think about beauty. I think
only how to solve the problem. But
when I have finished, if the solution
is not beautiful, I know it is wrong.
Richard Buckminster Fuller

Mechanical Engineering
Lighting Design
Sustainable Design
Electrical Engineering

Copenhagen
London
Sydney
Hong Kong
New York

GF 1, 17 Moore Street
Canberra, ACT, 2601, Australia
ABN 50 001 189 037
t : +61 / 02 6230 0502
e : info@steensenvarming.com

STEENSEN VARMING

However, since the new proposed PWD room has modified amenities and the sliding door is full height, there will be modifications to the ventilation requirements and the duct routing.

The existing exhaust fan which is serving the toilet exhausts has a capacity of 1725l/s is of good condition and capacity as it was installed in the recent past, however contractor will be required to carry out the investigation to be able to rebalance the exhaust grilles to suit.



Image 2 : Ground Floor Parent Toilet Supply & Exhaust Ducts

When I'm working on a problem,
I never think about beauty. I think
only how to solve the problem. But
when I have finished, if the solution
is not beautiful, I know it is wrong.
Richard Buckminster Fuller

Mechanical Engineering
Lighting Design
Sustainable Design
Electrical Engineering

Copenhagen
London
Sydney
Hong Kong
New York

GF 1, 17 Moore Street
Canberra, ACT, 2601, Australia
ABN 50 001 189 037
t : +61 / 02 6230 0502
e : info@steensenvarming.com

STEENSEN VARMING

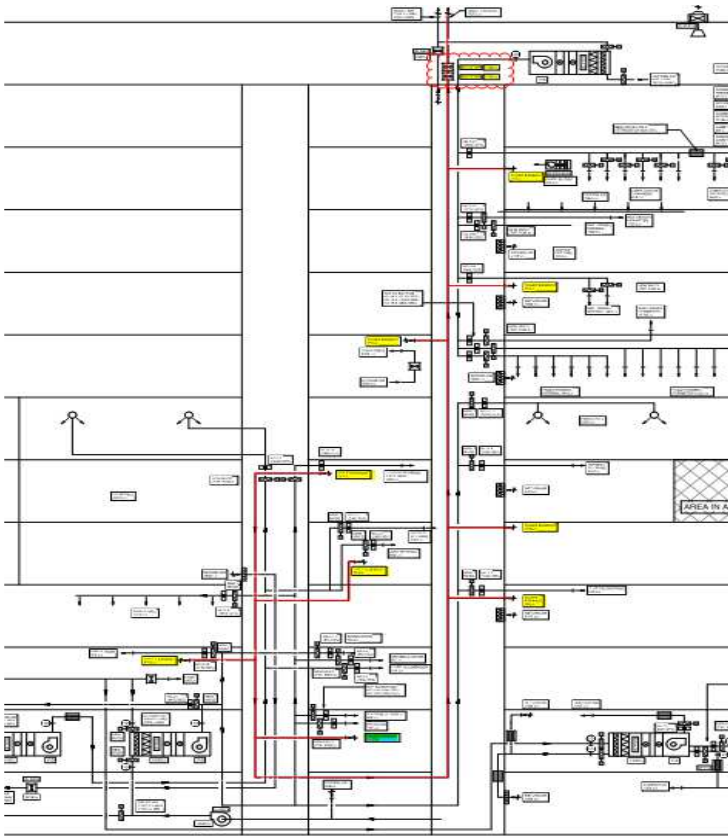


Image 3 : Air Schematic



Image 4 : Centralised Exhaust Fans

When I'm working on a problem,
I never think about beauty. I think
only how to solve the problem. But
when I have finished, if the solution
is not beautiful, I know it is wrong.
Richard Buckminster Fuller

Mechanical Engineering
Lighting Design
Sustainable Design
Electrical Engineering

Copenhagen
London
Sydney
Hong Kong
New York

GF 1, 17 Moore Street
Canberra, ACT, 2601, Australia
ABN 50 001 189 037
t : +61 / 02 6230 0502
e : info@steensenvarming.com

STEENSEN VARMING

Interruption of Existing Services

Where the work under the contract affects the continuity of existing services the Contractor shall arrange to have the work carried out at the least inconvenient time to the Principal. The work shall be organised to minimise the duration of inconvenience. This will mean out of hours work will need to be undertaken for elements of the Work or unless arranged otherwise with the Principal.

1.1.3 Redundant Equipment

All equipment and services made redundant through this project and required to be removed from its existing place of installation shall be removed from the site by the Contractor and shall be disposed of by the Contractor. All effort shall be made to recycle redundant equipment associated with this Contract. The Contractor shall provide a waste management plan together with records of relevant disposal and recycling activities.

All redundant mechanical services shall be stripped out to the extent indicated on the drawings. Redundant mechanical electrical services and control services shall be stripped back to source and associated ways in MCCs etc. shall be labelled as 'spare'.

When I'm working on a problem,
I never think about beauty. I think
only how to solve the problem. But
when I have finished, if the solution
is not beautiful, I know it is wrong.
Richard Buckminster Fuller

Mechanical Engineering
Lighting Design
Sustainable Design
Electrical Engineering

Copenhagen
London
Sydney
Hong Kong
New York

GF 1, 17 Moore Street
Canberra, ACT, 2601, Australia
ABN 50 001 189 037
t : +61 / 02 6230 0502
e : info@steensenvarming.com

STEENSEN VARMING

2.0 Project Parties

2.1 Contractor

The Contractor is referred here as the company engaged to provide the complete works including all materials, designs and provisions for any temporary works.

Where works are described as being provided by the Contractor in this specification they are expected to be included in the tender price for the Project whether or not they are included in other works descriptions for other sections of the Project. All works described in this specification as being provided by the Contractor are to include all materials and designs where required for the completion of the works.

2.2 Mechanical Services Contractor

The mechanical services contractor is referred to here when specific items are known to be applicable to the mechanical services associated with the Project.

The reference to works being undertaken by a mechanical services contractor does not obligate the contractor to engage a specific company associated with mechanical services to undertake the works. All works described as being by a mechanical services contractor are part of the overall works for the Project that the Contractor is contracted to provide.

2.3 Principal

The Principal for the Project is High Court of Australia.
The Principal's Representative is Eric Martin Architects

3.0 Mechanical Services Works

3.1 Scope of Works

This scope of works is the complete tender package for works described herein.

General

The divisions of the scopes for various trades are indicative only in this specification and does oblige the Contractor to divide the works as described. The divisions are based on standard practice for ease of division of the works for the Contractor.

3.2 Basis of the Mechanical Services Performance Specification

The mechanical services contractor shall design, supply and construct all the mechanical services required for the Project described herein. The items included in this specification are indicative of the minimum standards and requirements for the Project and do not limit the extent of works for all items required to complete the Project. The mechanical services contractor is to allow all components and associated works as required to complete the works whether stated or not in this specification or shown on the drawings.

3.3 Scope of Mechanical Services

The scope of works for this Project for the mechanical services includes but is not limited to the following:

Ground Floor Parent Amenity

- Detailed site inspection of the existing mechanical services including areas associated with this project, review of "AS" built drawings and Operating and Maintenance Manuals all located to enable to determine the extent of works.
- Existing supply ductwork must be demolished because of the new full height sliding door.
- Extend the existing supply air ductwork to the room as shown in the attached drawings M-2000.
- Supply and install a supply face grille, 150x150 to supply the required outdoor airflow, 75 L/s to the room.
- After removing the existing supply air ductwork, remaining piece of the ductwork needs to be capped which is serving the adjacent space as shown in M-2000.
- The exhaust ductworks must be replaced with a new size of the duct works requested and shown in the attached drawings M-2000.
- A 150x150 exhaust grille is required to be located on the exhaust duct work inside the room to exhaust of 80 L/s air flow.
- Extend the new exhaust ductwork to connect the main toilet exhaust ductwork.

When I'm working on a problem,
I never think about beauty. I think
only how to solve the problem. But
when I have finished, if the solution
is not beautiful, I know it is wrong.
Richard Buckminster Fuller

Mechanical Engineering
Lighting Design
Sustainable Design
Electrical Engineering

Copenhagen
London
Sydney
Hong Kong
New York

GF 1, 17 Moore Street
Canberra, ACT, 2601, Australia
ABN 50 001 189 037
t : +61 / 02 6230 0502
e : info@steensenvarming.com

STEENSEN VARMING

- Connect the existing exhaust grilles from female toilets to new exhaust duct as shown in M-2000.
- Open the VCD located at the riser fully open.
- Testing and Commissioning of the completed grilles within the toilet space.
- All air flows are to be balanced to within 5% of the final design air flows for the systems.
- The existing exhaust fan capacity to be reconfirmed on site which is serving the toilets from L1 to L9 is of good condition and capacity as it was installed in the recent past, contractor will be able to rebalance the exhaust grilles to suit.
- Labelling of all grilles with trifoliate labels.

3.4 Other Trades

Services provided by other trades are expected to be as the following sections.
Coordination between all trades is expected to be included within the Contractor's scope of works.

3.4.1 Building Trade

- Ceiling penetrations for all grilles, and diffusers

Standards and Authorities

All mechanical services shall be in accordance with all related statutory and other authorities including but not limited to the following:

- National Construction Code Series (BCA) – 2019
- AS3000 – Wiring Rules
- The Property Council of Australia.
- The Standards Association of Australia, AS1668.1:2015
- AS1668.2:2012 and AS3666.

Local Authorities such as:

- ACTEW Corporation
- ACT Fire Brigade.
- ACT Environment, Planning and Sustainable Development Directorate .
- ACT WorkCover.
- ACTPLA – Planning Authority
- ACT NCA – National Capital Authority

Any other Authority having jurisdiction over the installation to ensure that the machinery and installation will comply with the Rules and Regulations.

On completion of the installation and prior to final payment being made the Contractor is to arrange for each Authority having jurisdiction to inspect and check the contract works and where required by the Principal to obtain certificates from such Authority to the effect that the equipment, machinery and installation complies

with that Authority's requirements. These certificates are to be forwarded to the Principal.

The design and installation of the services must comply with the seismic constraint requirements in accordance with the AS1170.4 SAA Earthquake Code.

3.5 Documentation

3.5.1 General Requirements

The Contractor is required to provide from a suitable qualified Mechanical Services Contractor the following documentation:

- Shop drawings of the proposed works for review by the Principal & Engineer
- Equipment selection manufactures data for grilles
- System pressure calculations of all ducted existing AHU SA and RA fans
- Ductwork design to AS4254 Pt1 & 2. 2012
- As-built documentation of the mechanical services and other works completed as part of the Project that relate to the mechanical services
- Operation and maintenance manuals of the works (if any) including the following:
 - Equipment and material schedules
 - Supplier schedules
- As-built documentation
- Commissioning results
- Installation certificates of the mechanical services
- 12months Services or same as head contract.

3.6 Equipment

3.7 Grilles and Diffusers

For this project the exhaust & supply air grilles shall be retained by the MSC and shall be inspected and checked to be equal to design spec.

All grilles to have removable cores and

- All grilles to be painted as per the architectural requirements.